

Landesbibliothek Oldenburg

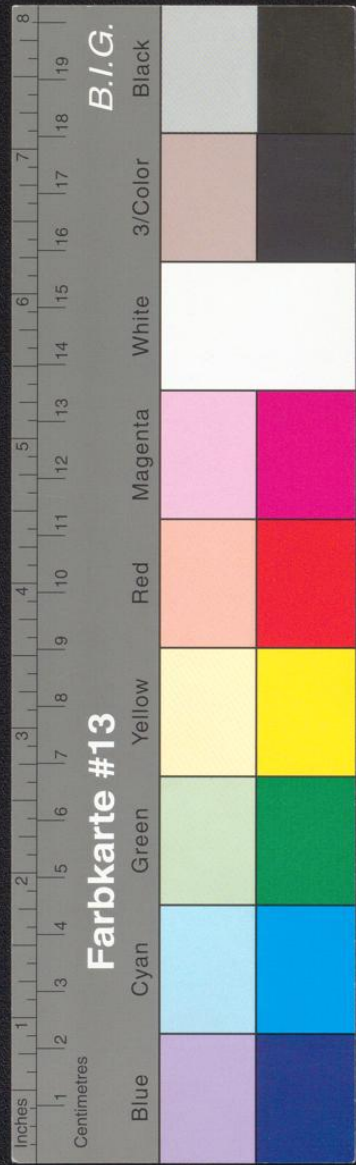
Digitalisierung von Drucken

Urbis Bremæ Territorium

Dilich, Wilhelm

[Kassel], [1603?]

[urn:nbn:de:gbv:45:1-296276](https://nbn-resolving.org/urn:nbn:de:gbv:45:1-296276)



EXPLICATION O-
TARUM TABULÆ
 QVINTÆ.

Quinq; sequentes ta-
 bulæ præfeturarum
 Urbis delineationem exhibent.
 Quarum prima generalis topographia
 territorii Bremensis, reliquæ
 partium eius in præfeturas.

Numeri verò, quos passim huic
 tabulæ insertos vides, hæc designant
 loca, nempe
 1 Kirchhuchting, 2 Groland,
 3 Mittelhuchting, 4 Bruchhuchting,
 5 Nie-

land, 6 Habenhausen, 7 Woltmarshausen,
 8 Lanckenau, 9 Rablinghausen
 Viehlandia pagos. 10 Hemlingen, 11
 Schwachhausen, 12 Oslebeshausen,
 Moerlose Kercke, 15 Nedersburen,
 16 Lobbendorff, 17 Oumüder foert,
 18 Sebvanecken foert, 19 Goesper moele,
 singulos pagos: & in præfeturâ
 Bederkesana, 20 Langen, 21
 Siverden, 22 Alnefede, 23
 Valckenborch, 24 Grote Heine.

TA-

0 AM 179

211219

merhafen. 162 Calmaria. lidissima & emporium frequens.
 163 WesterWick; Gotlandia insula celebris Danorum, cuius portus celeberrimus Visby, olim civitas.
 Upsal archiepiscopalis olim civitas.
 Nicopen civitas maritima va-

Et huc usq; de tabulis navigationum
 commoditati dicatis.



ALBERD 179

Kester 0235