

**Landesbibliothek Oldenburg**

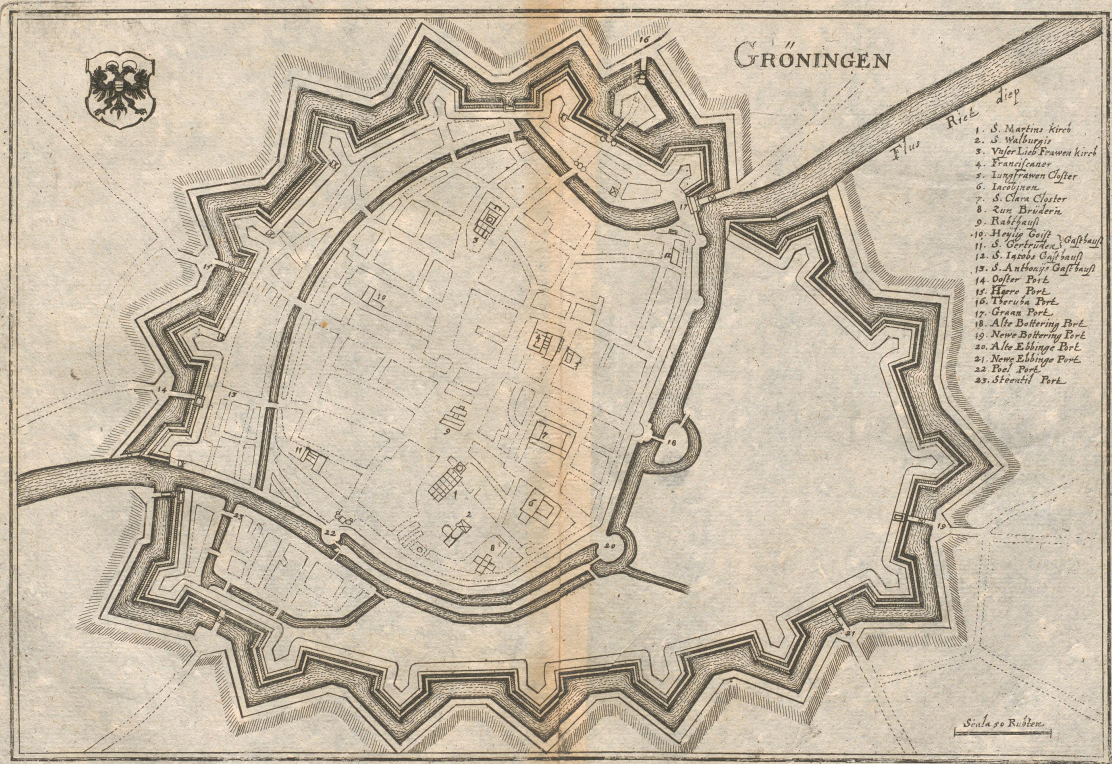
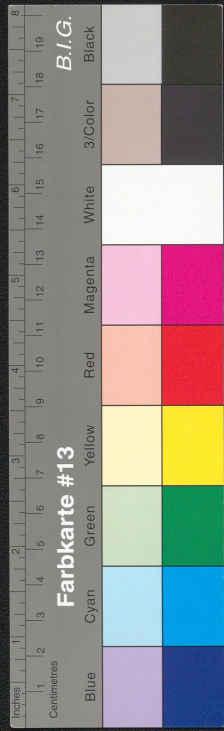
**Digitalisierung von Drucken**

**Gröningen**

**Merian, Caspar**

**[Frankfurt am Main], [zwischen 1650 und 1660]**

[urn:nbn:de:gbv:45:1-314779](https://nbn-resolving.org/urn:nbn:de:gbv:45:1-314779)

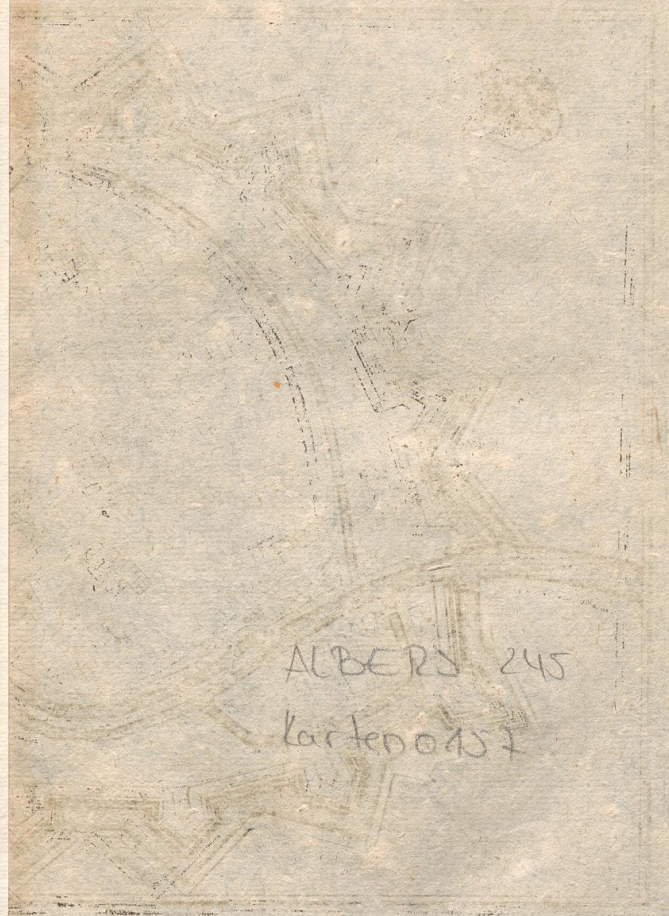
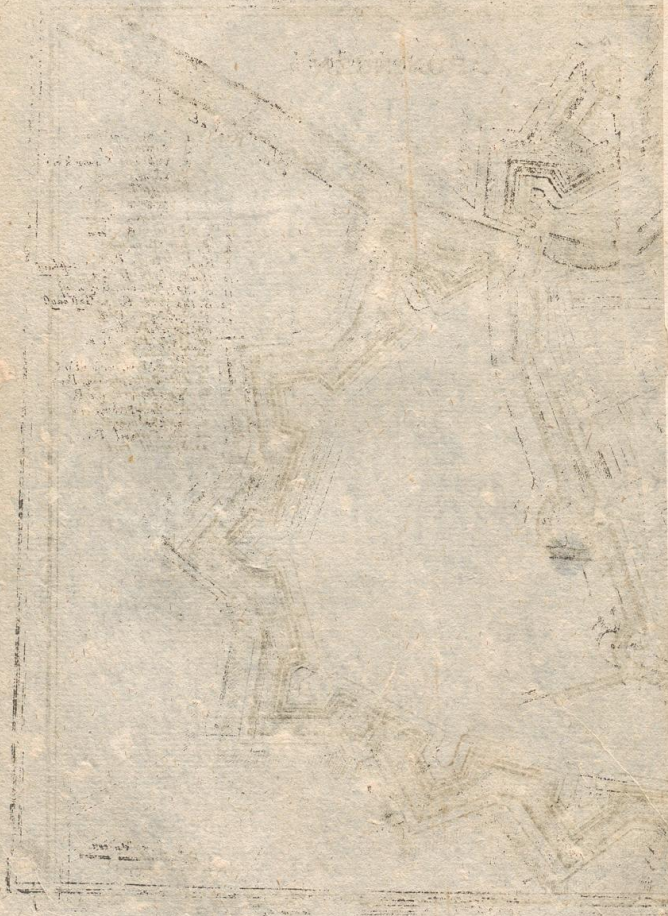


GRONINGEN

- Flus Rieck diep
1. S. Martini kirch
  2. S. Walburgis
  3. Voller Lieb Frauen kirch
  4. Franciscaner
  5. Longfrauen Oyster
  6. Leuzijan
  7. S. Clara Kloster
  8. Russ Bruders
  9. Backhuys
  10. St. Jans Gasthuys
  11. S. Oorloofse Gasthuys
  12. S. Jans Gasthuys
  13. S. Anthonis Gasthuys
  14. Ooster Poort
  15. Egere Poort
  16. Verreke Poort
  17. Groen Poort
  18. Alde Battering Poort
  19. Nieuw Battering Poort
  20. Alde Ebbingse Poort
  21. Nieuw Ebbingse Poort
  22. Poel Poort
  23. St. Jans Poort

Scala 50 Ruthen

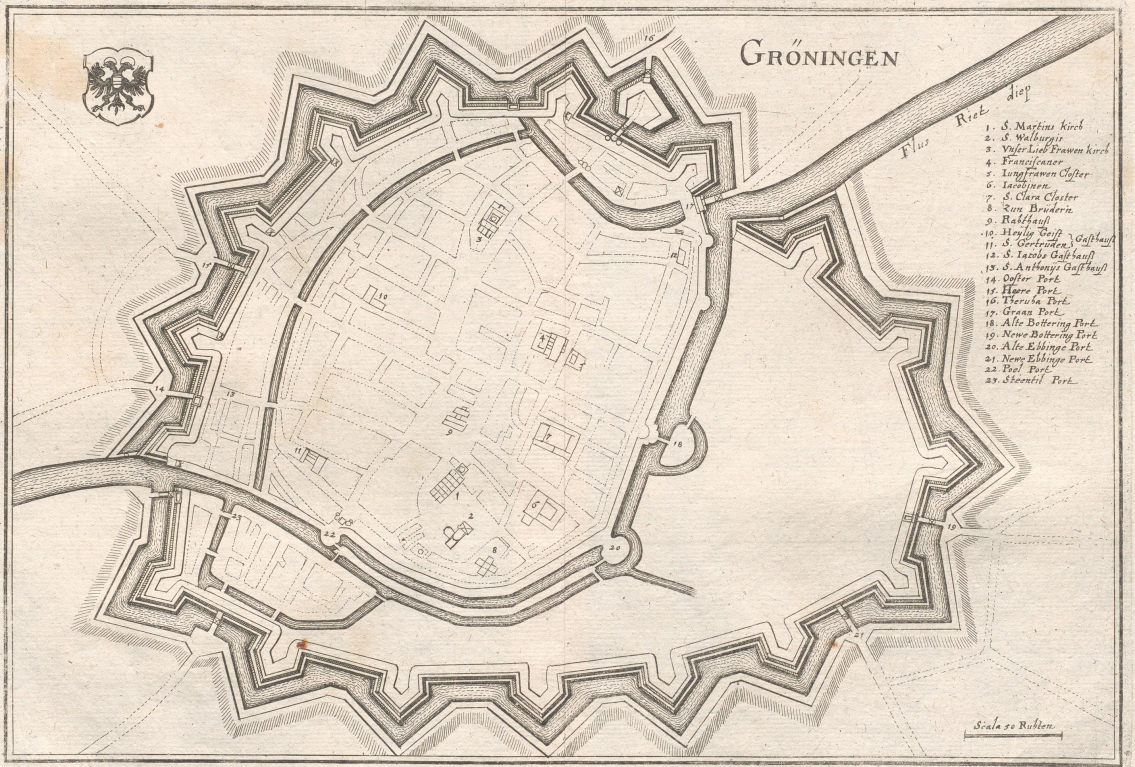
BIB 245



ALBERS 245

Kartenort

Groningen



1. S. Martinus kirk
2. S. Walburgis
3. Volder Liek Frauen kirk
4. Franciscaner
5. Longfrauen Cyfter
6. Lechymen
7. S. Clara Closter
8. Russ Brudern
9. Ruffiauff
10. Heilige Geift
11. S. Oertrien
12. S. Jacobs Gasthuus
13. S. Anthony Gasthuus
14. Ooster Port
15. Hoor Port
16. Herula Port
17. Groen Port
18. Alde Bottering Port
19. Nieuw Bottering Port
20. Alde Ebbinge Port
21. Nieuw Ebbinge Port
22. Pool Port
23. Eborard Port

Scala 50 Rulden



B. 4 147

ALBERS 147  
Karten 0106

4201

