

Landesbibliothek Oldenburg

Digitalisierung von Drucken

Niederländische Kunst der Gegenwart

Gerdes, Ed.

Oldenburg, 1941

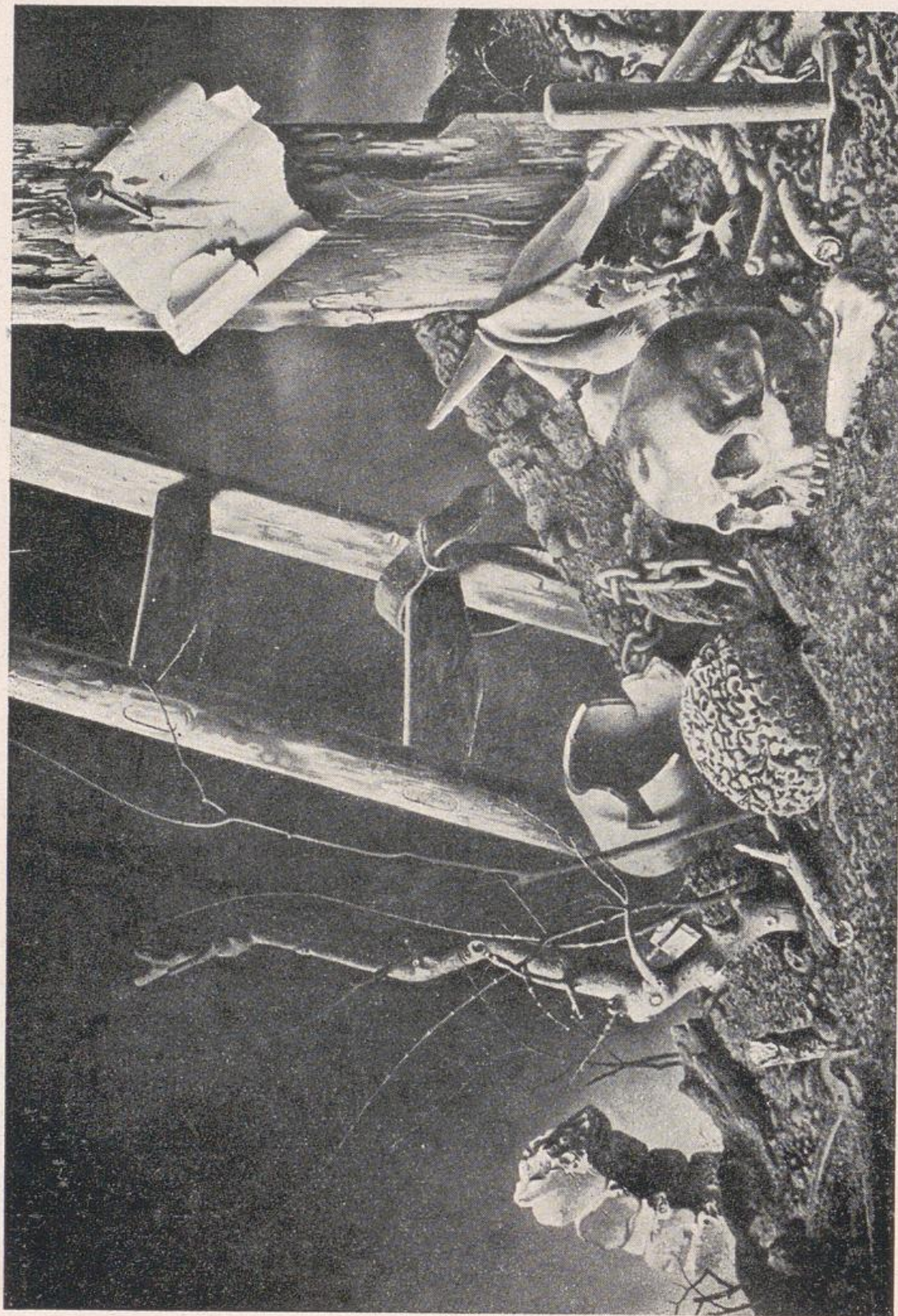
Illustrationen

[urn:nbn:de:gbv:45:1-332962](https://nbn-resolving.org/urn:nbn:de:gbv:45:1-332962)



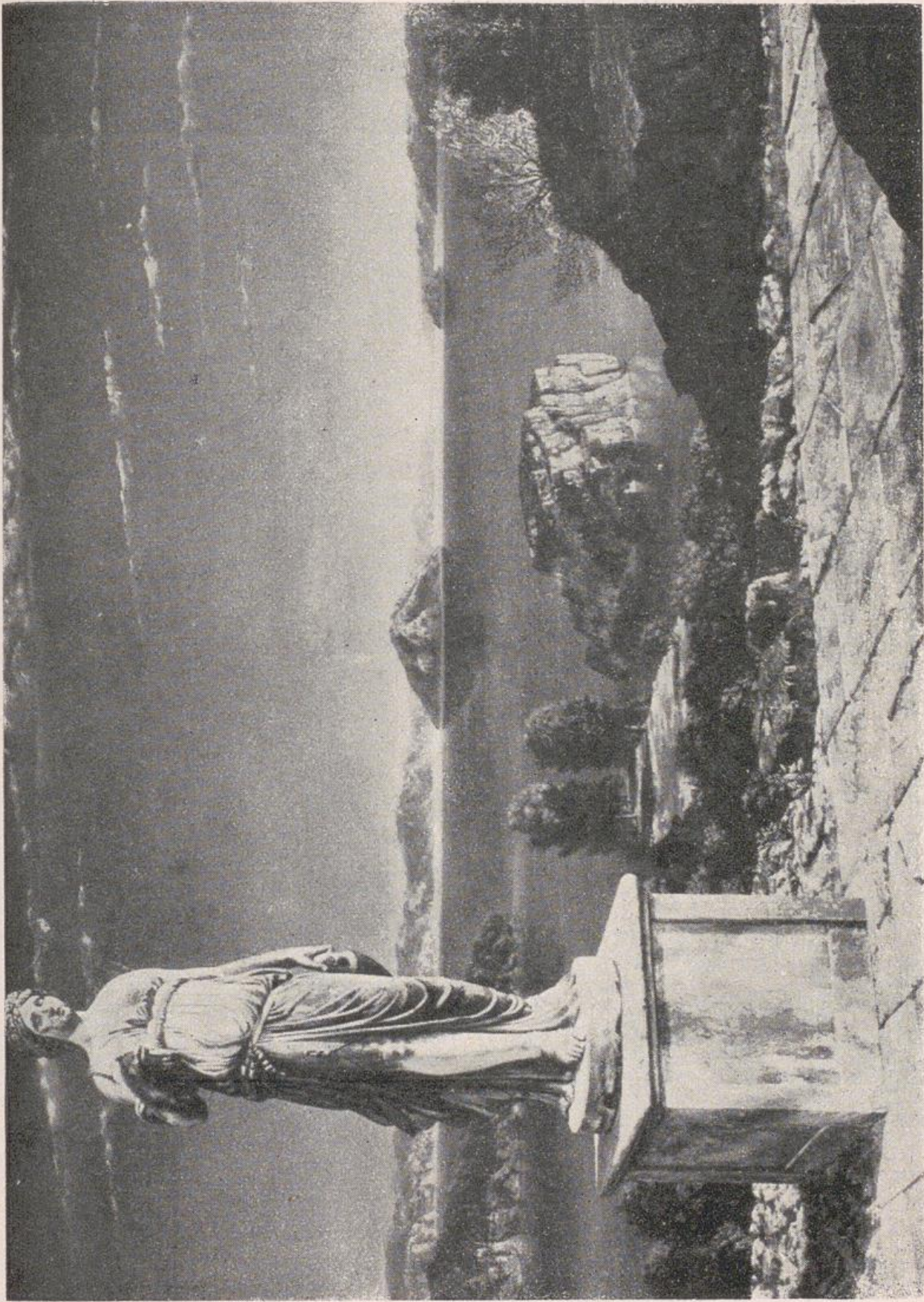
J. SLUYTERS

Stilleben mit Amaryllis



R. HYNCKES

Der Schwamm der Bitterkeit



Arkadische Landschaft

A. G. WILLINK



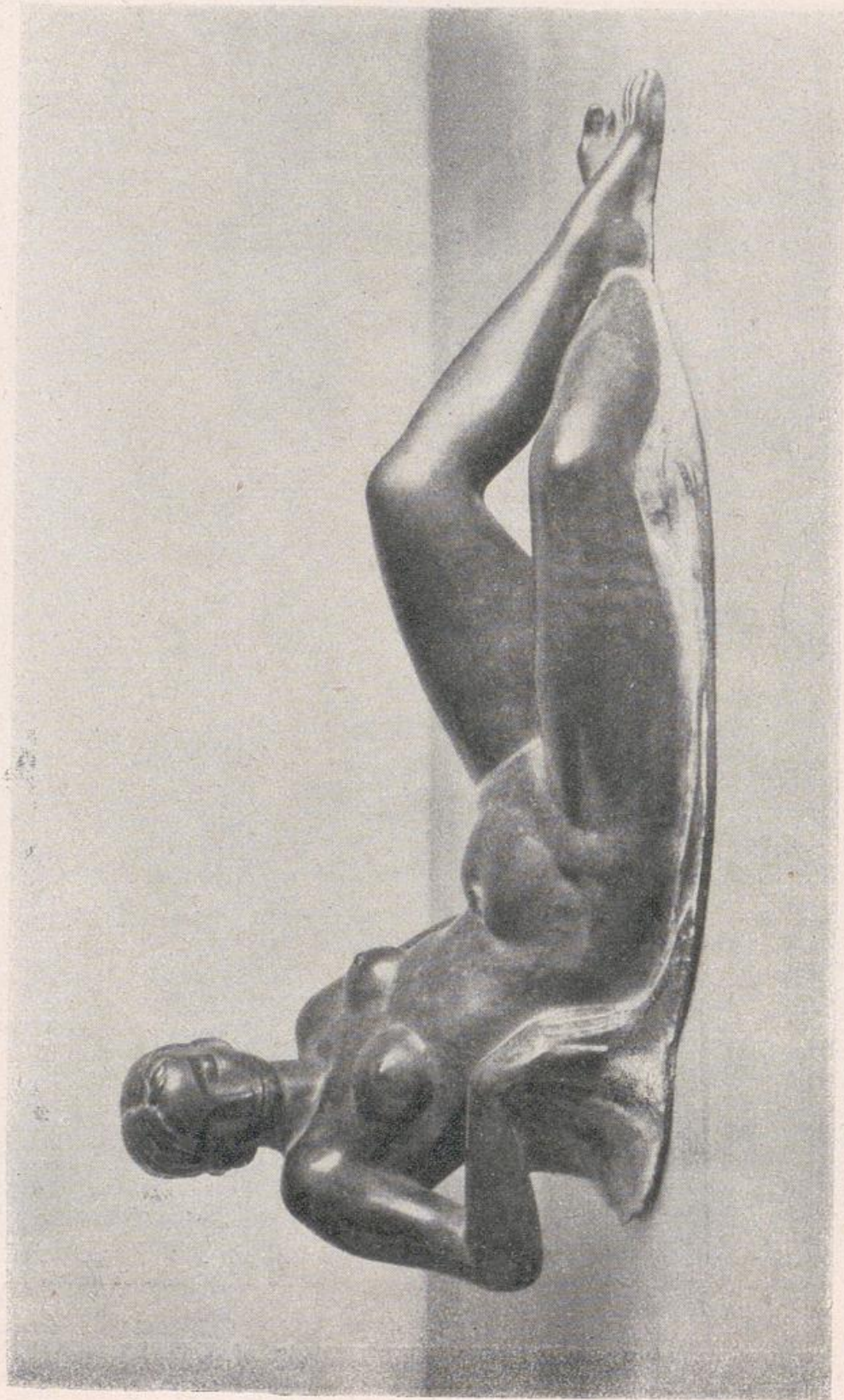
W. SCHUMACHER

Toledo



M. WIEGMAN

Mädchen im Korbessel



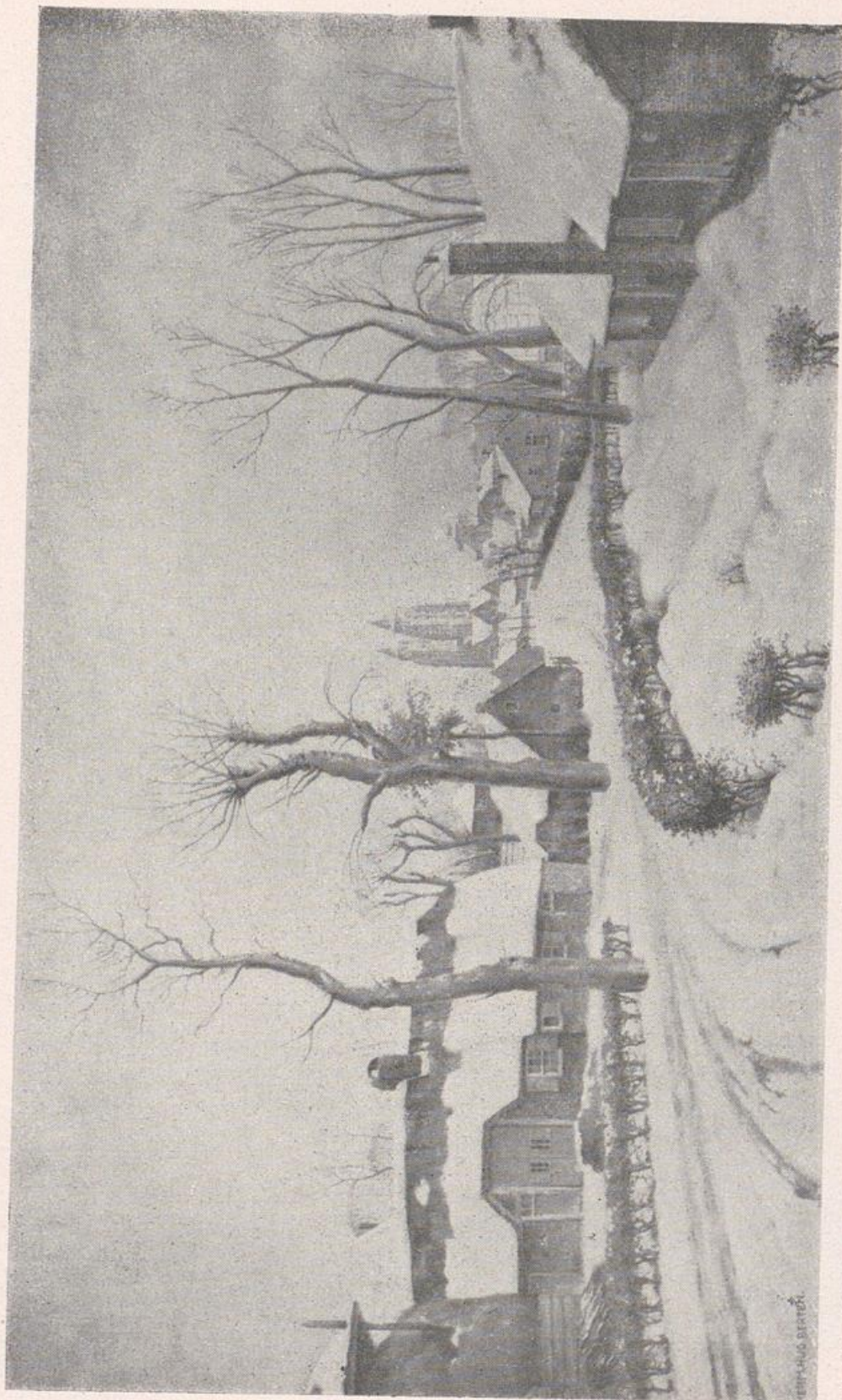
JOHAN POLET

Liegende Figur



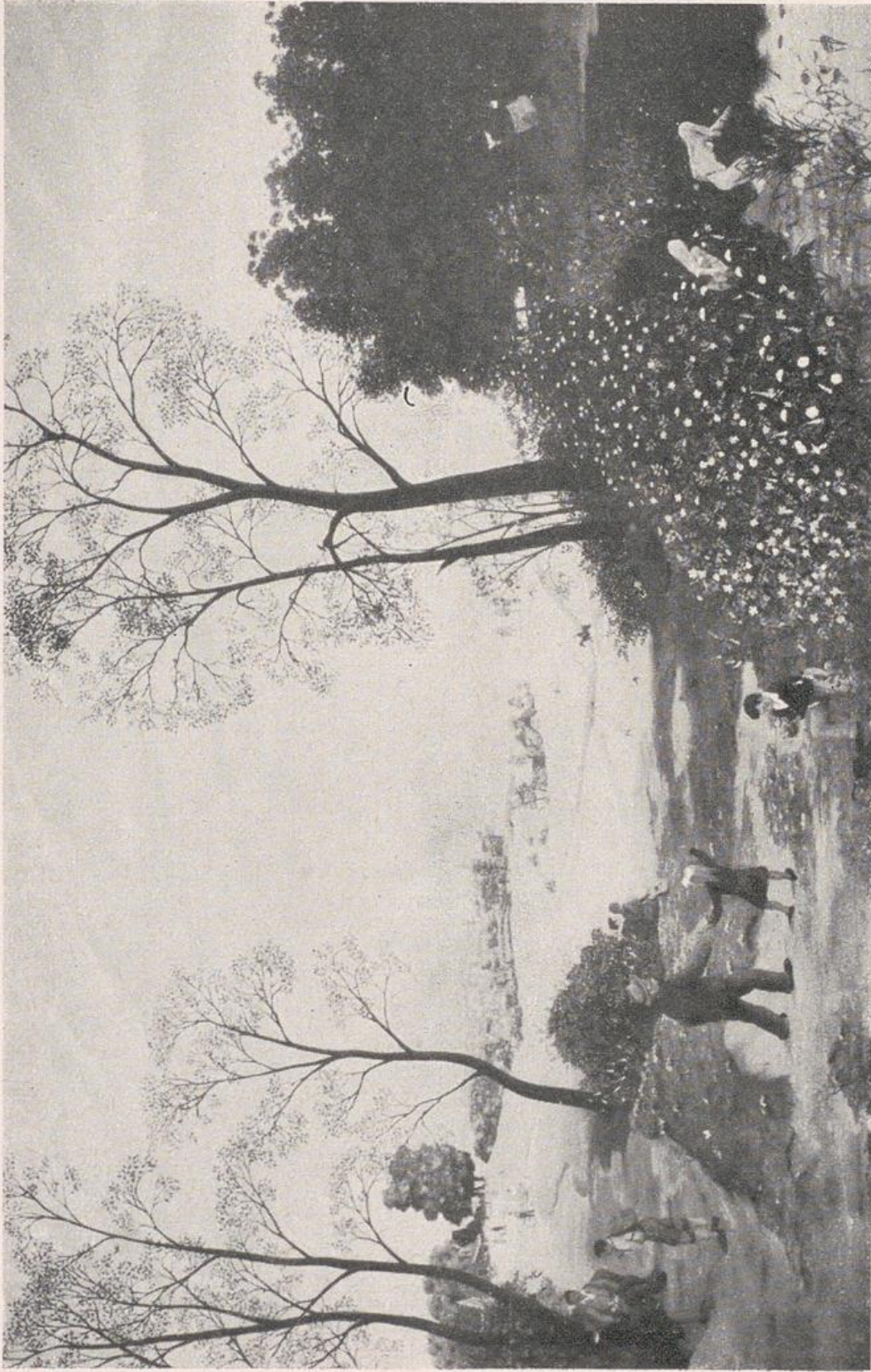
Blumen und Früchte

A. G. COLNOT



H. H. BERTEN

Winter in Laren



E. HOOYBERG

Sommersonntag



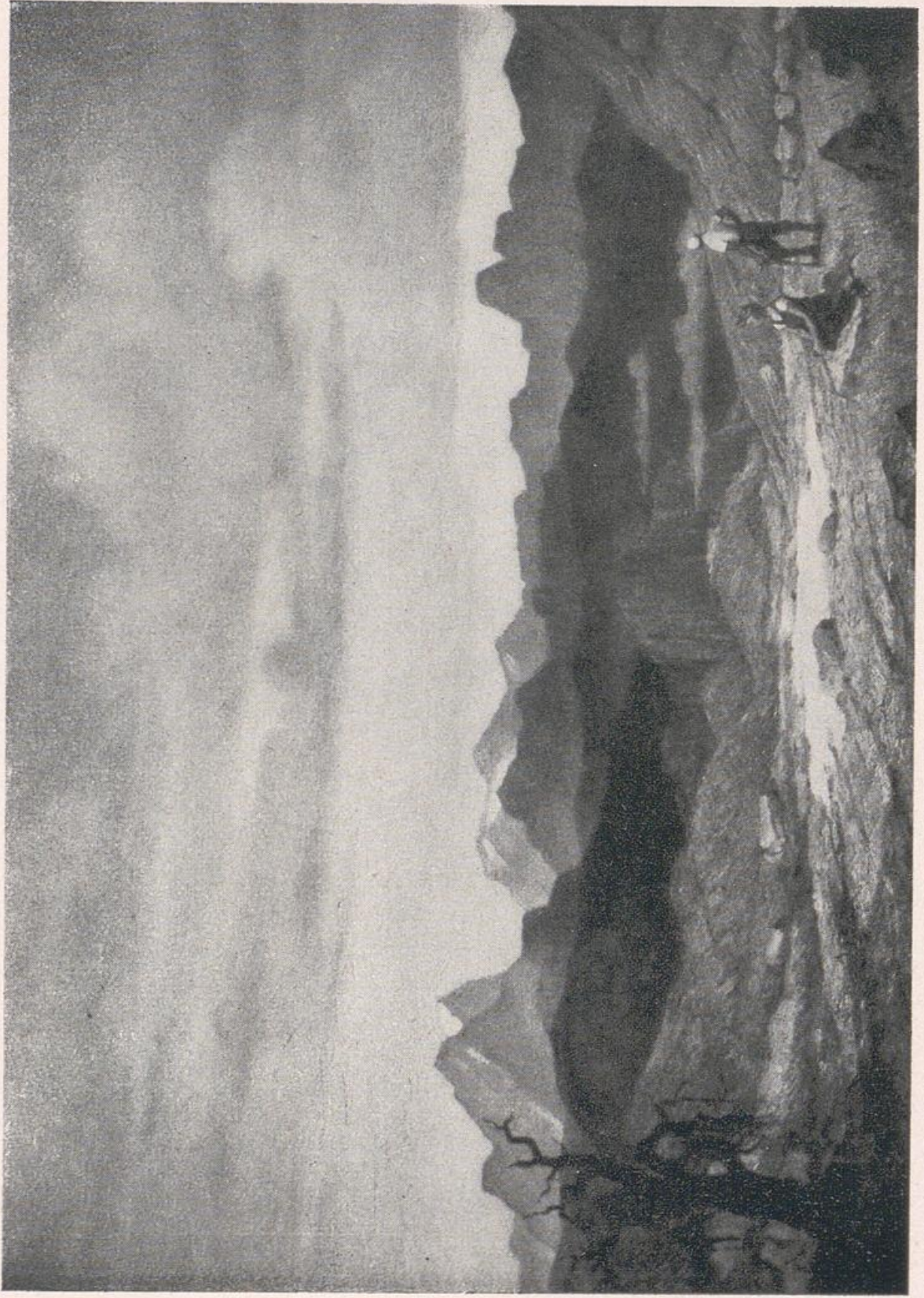
D. Ket †

Mein Vater



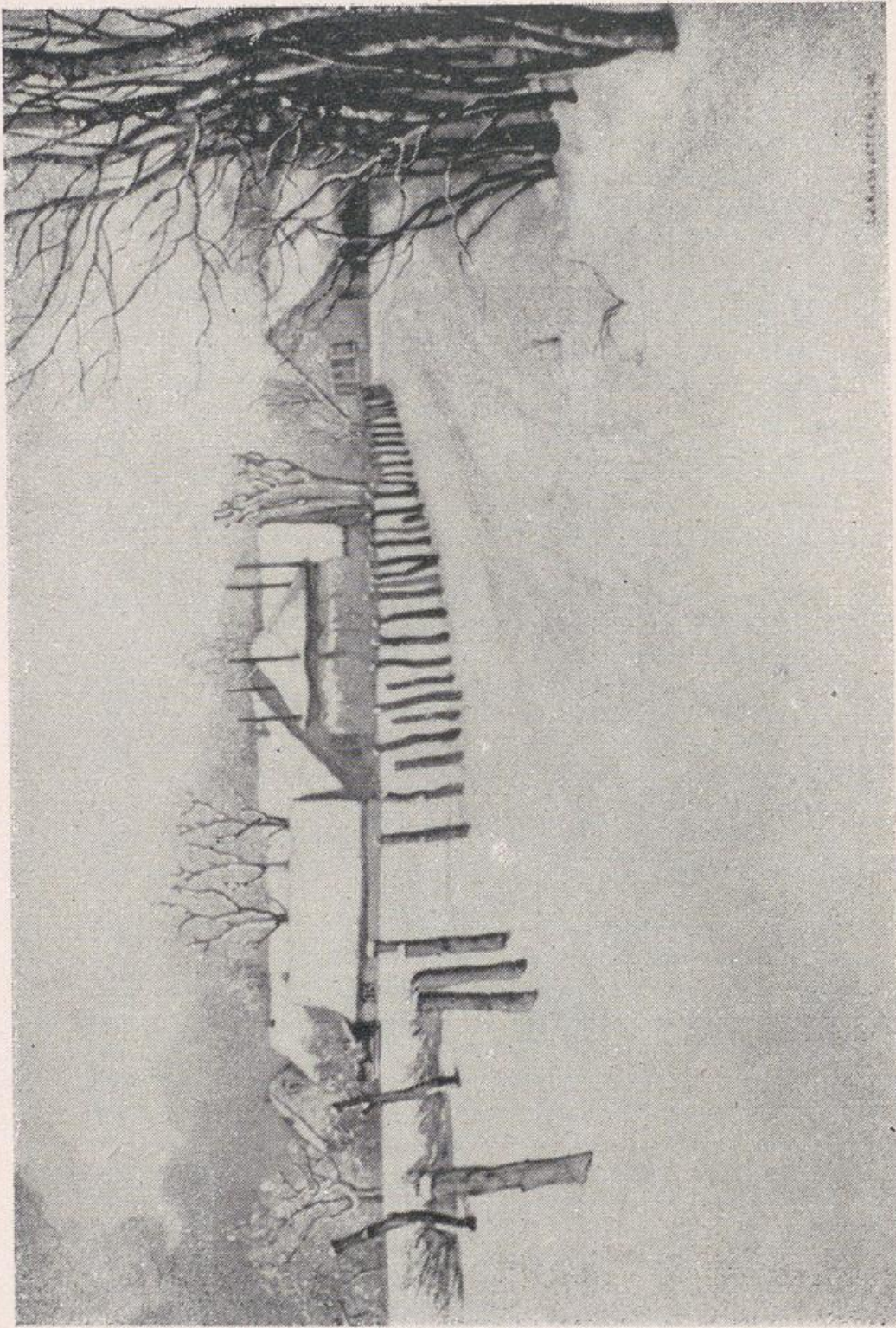
D. TE NIJENHUIS

Junge Frau



Die Berge und wir

EDUARD GERDES



Schneelandschaft

J. W. KIESEWETTER



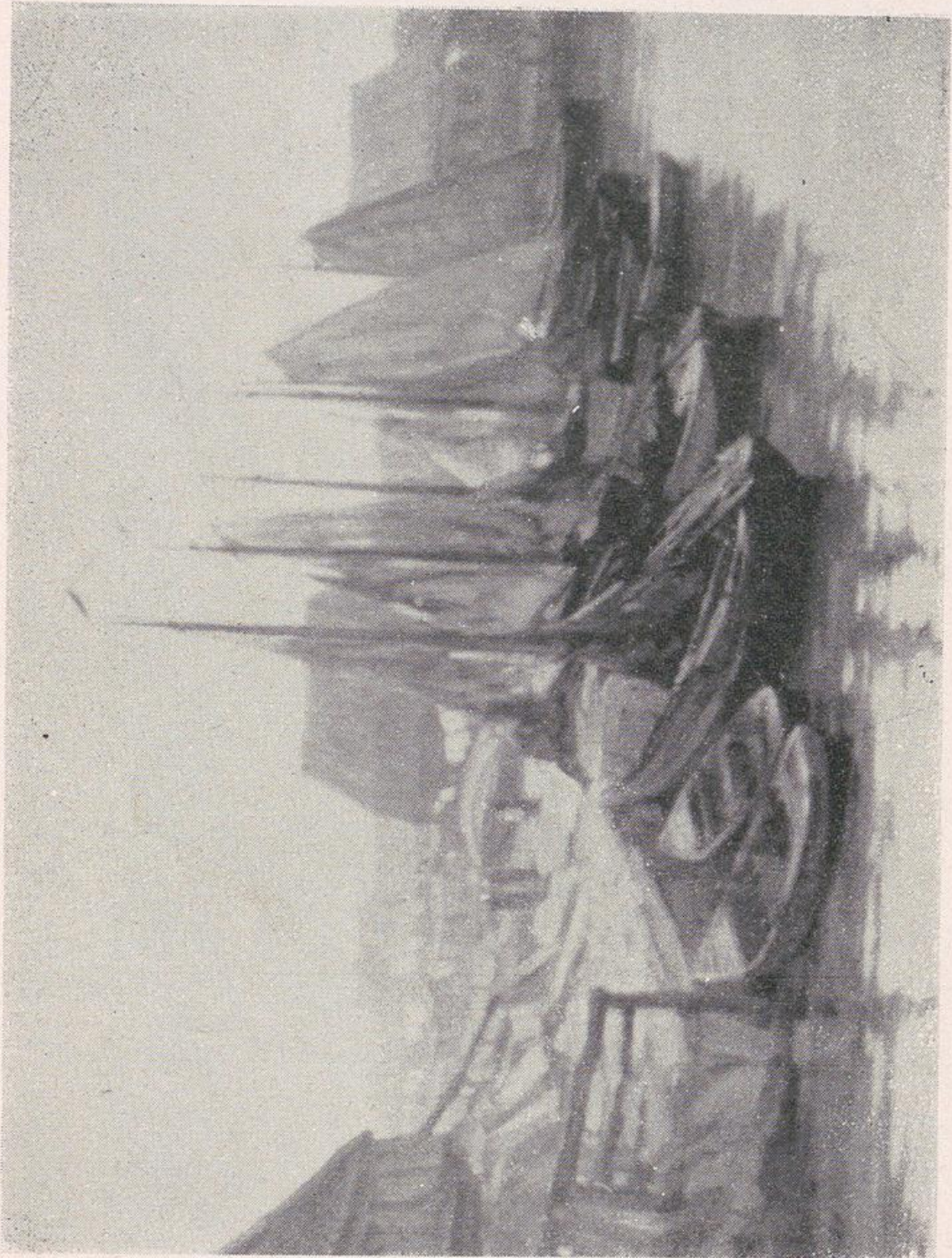
J. VAN WOLDE

Frauenkopf



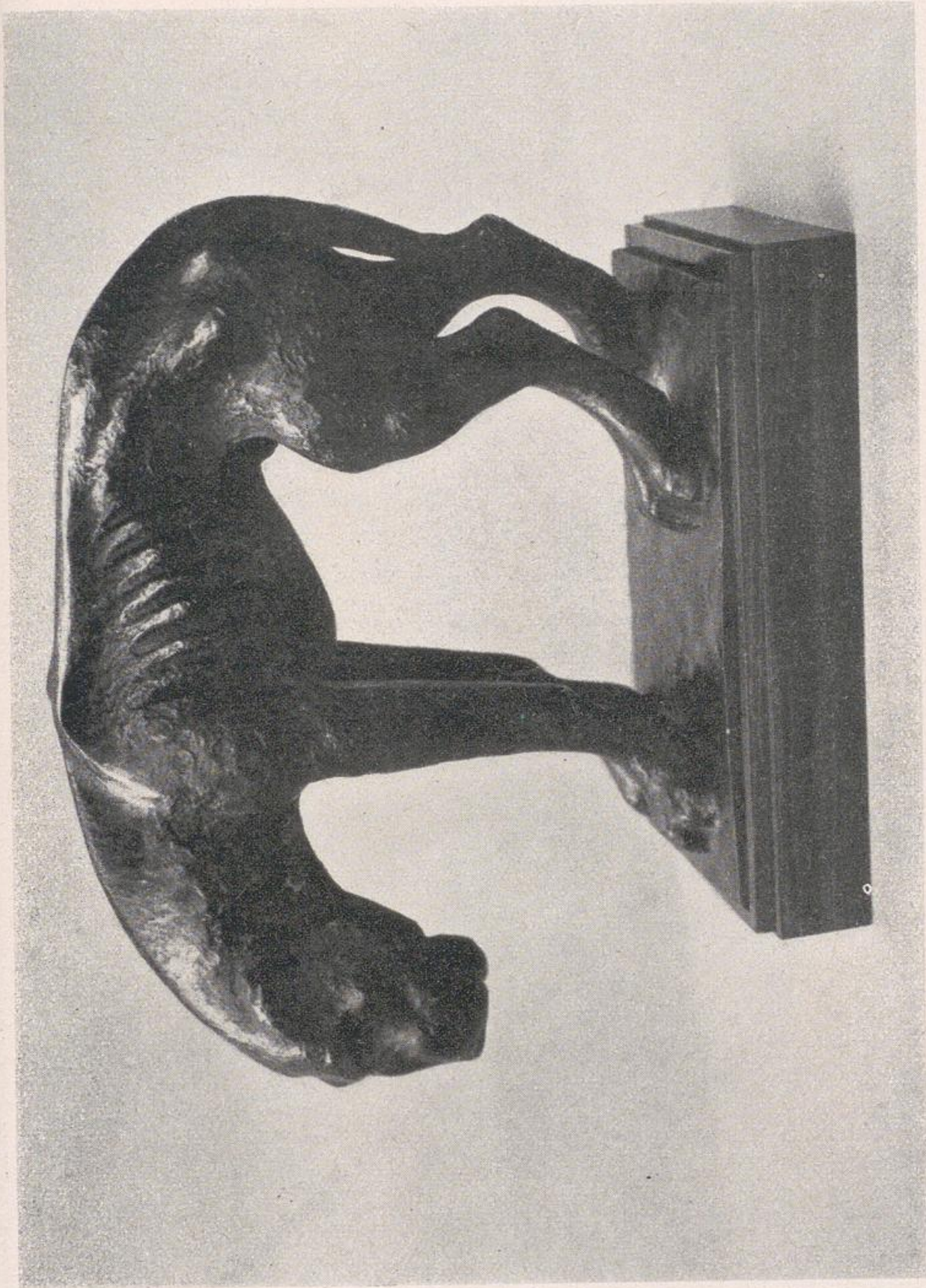
W. DOOYEWAARD

Prinzessin auf Bali



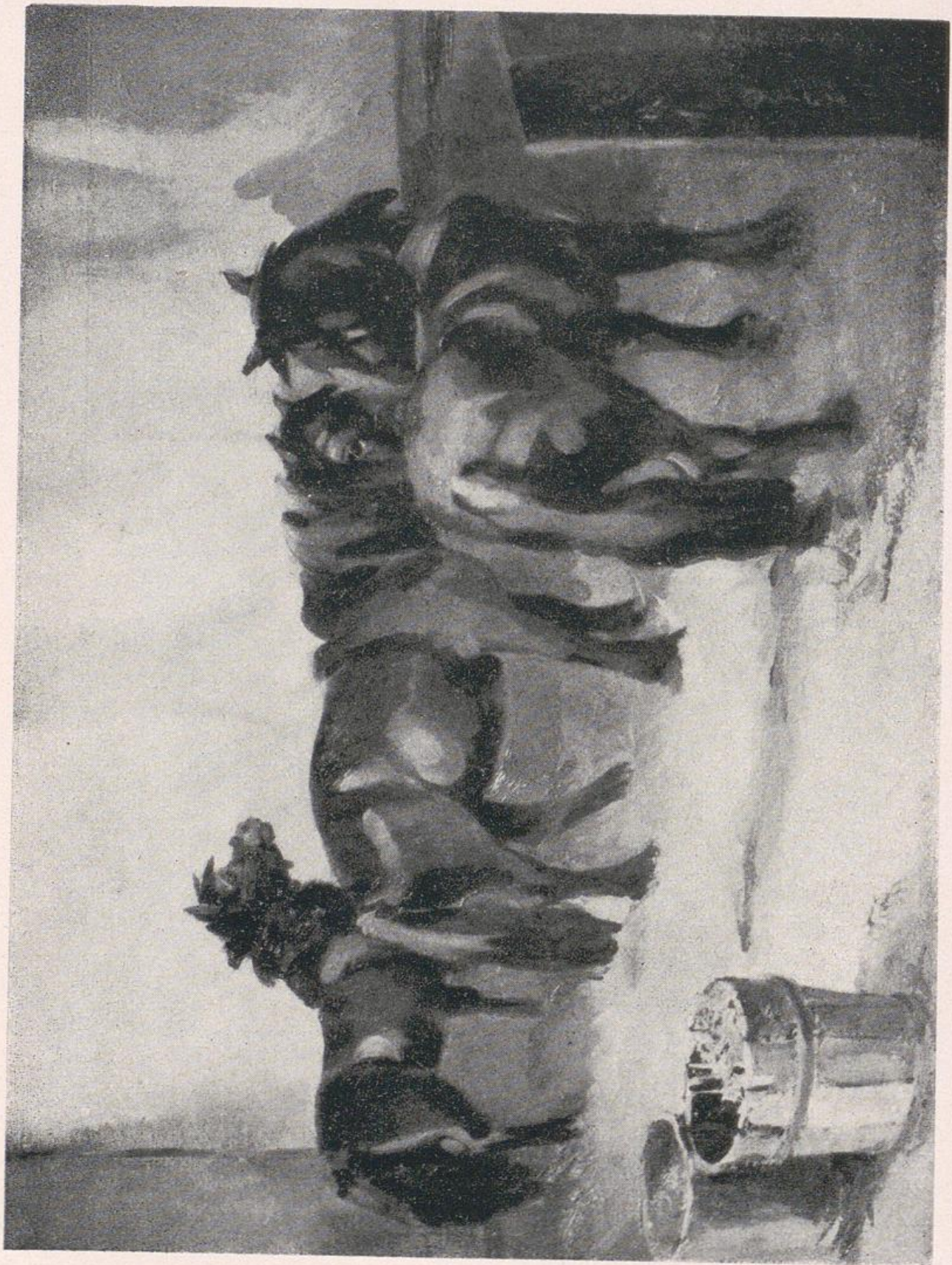
Hafen Spakenburg

W. F. NOORDIJK



Straßenhund

J. RAEDECKER



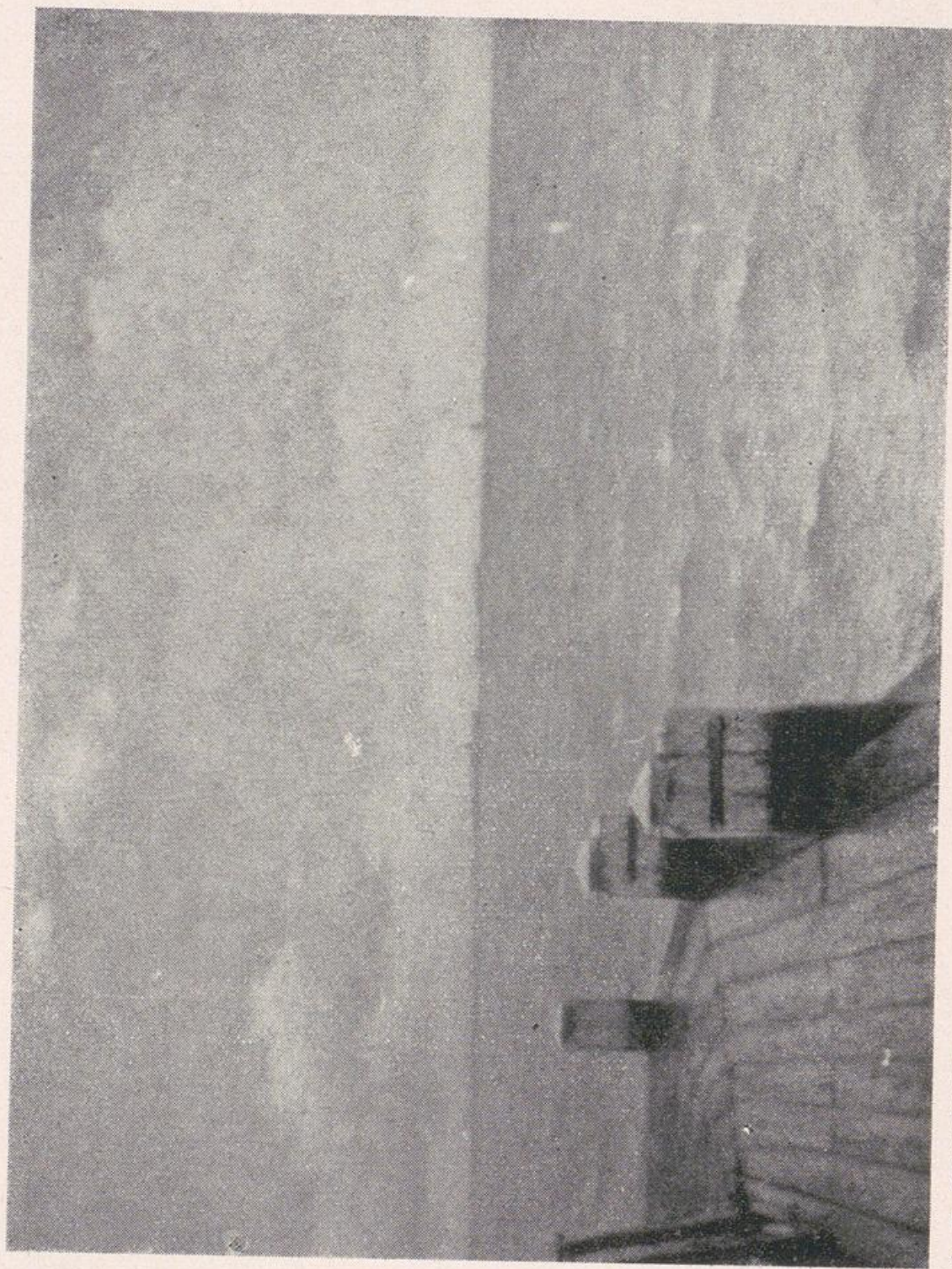
B. VAN BEEK-STROEVE

Zirkuspferde



Condor

S. VAN BEEK



A. P. SCHOTEL

Zuider See



G. VAN DUFFELEN

Knabe mit Spielflugzeug



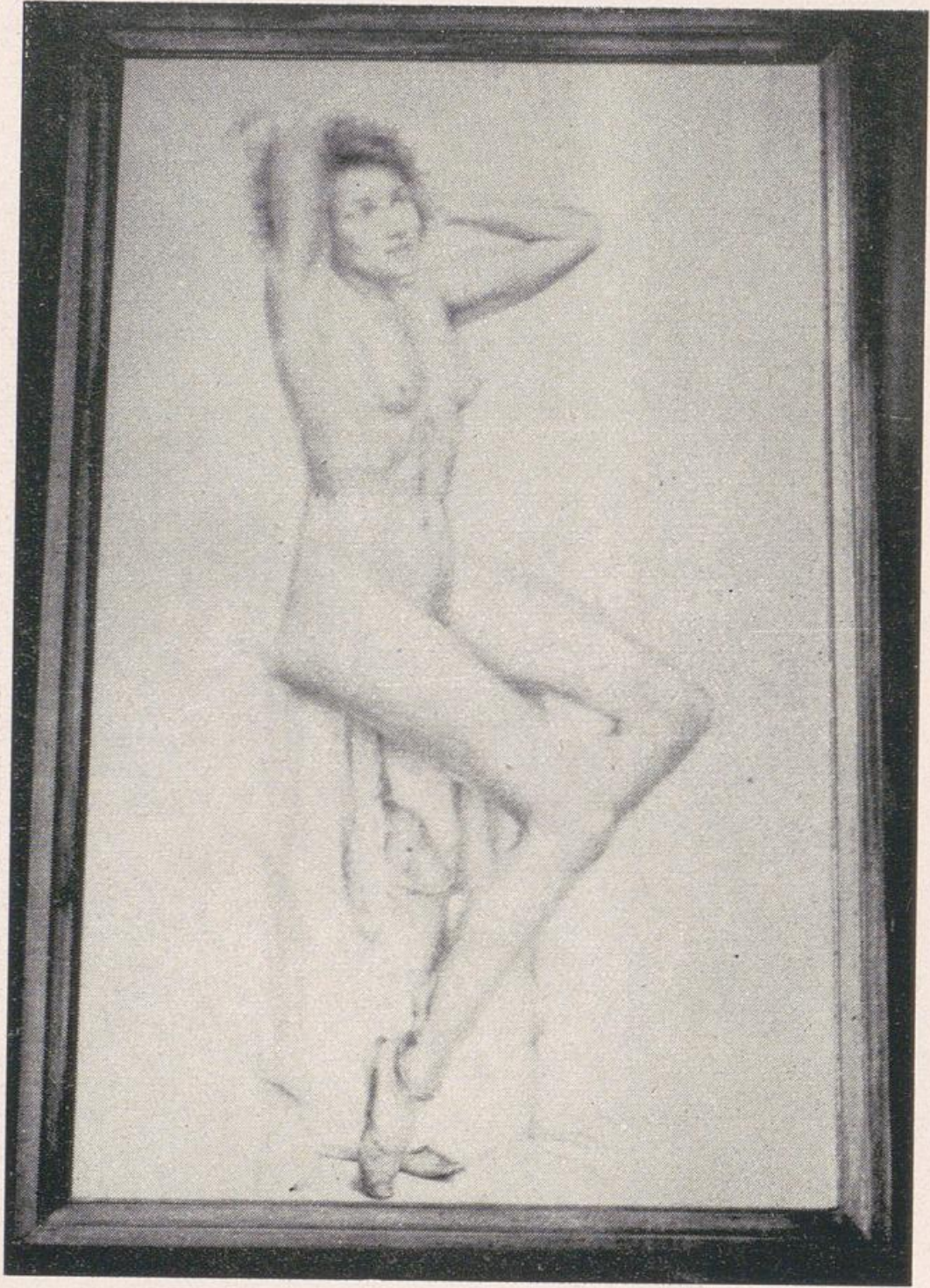
FR. L. M. DONY

Junger Mann



J. A. W. VON STEIN

Nocturno



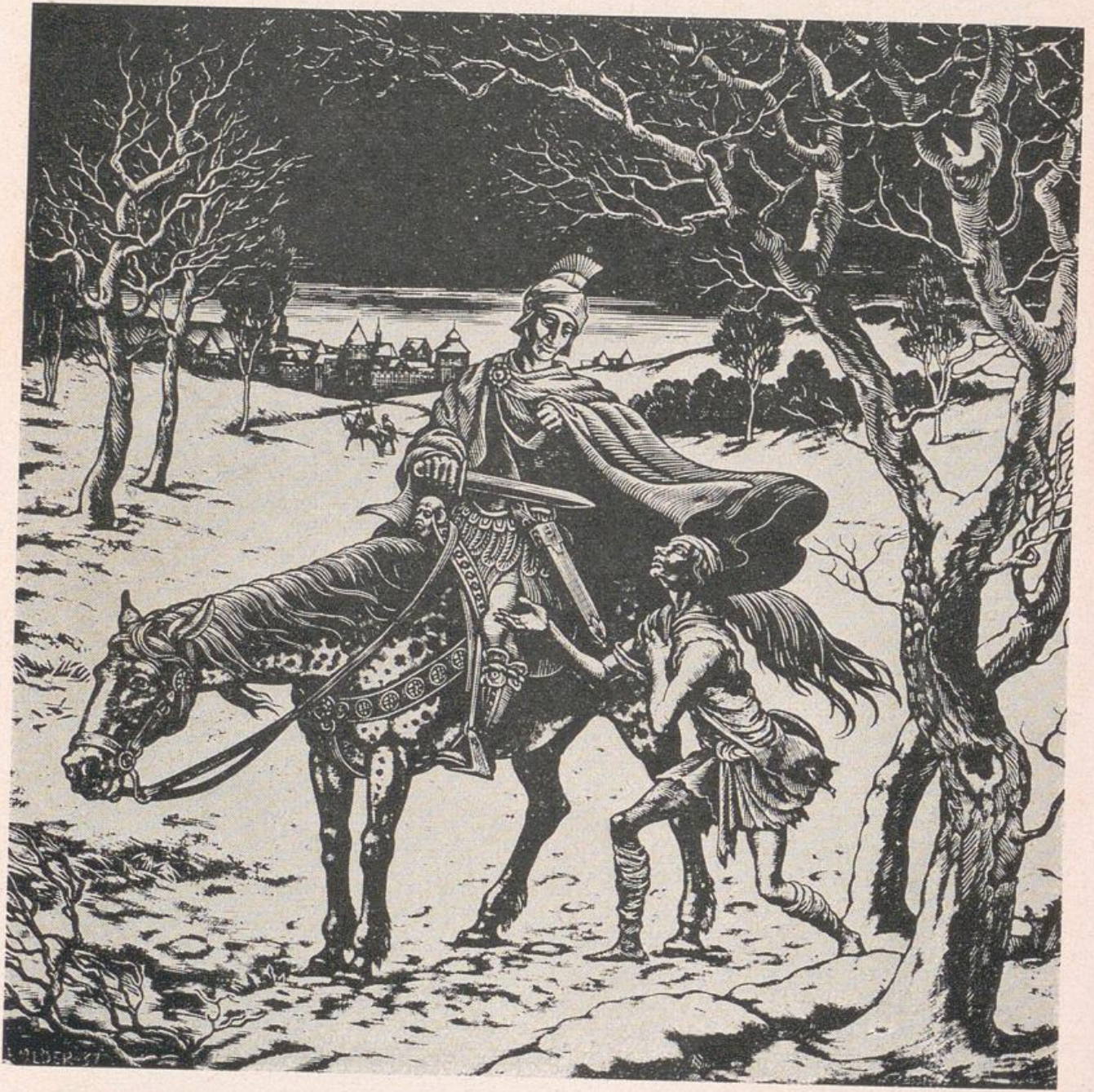
P. STORDIAU

Evas Macht



B. PEIZEL

Mädchen



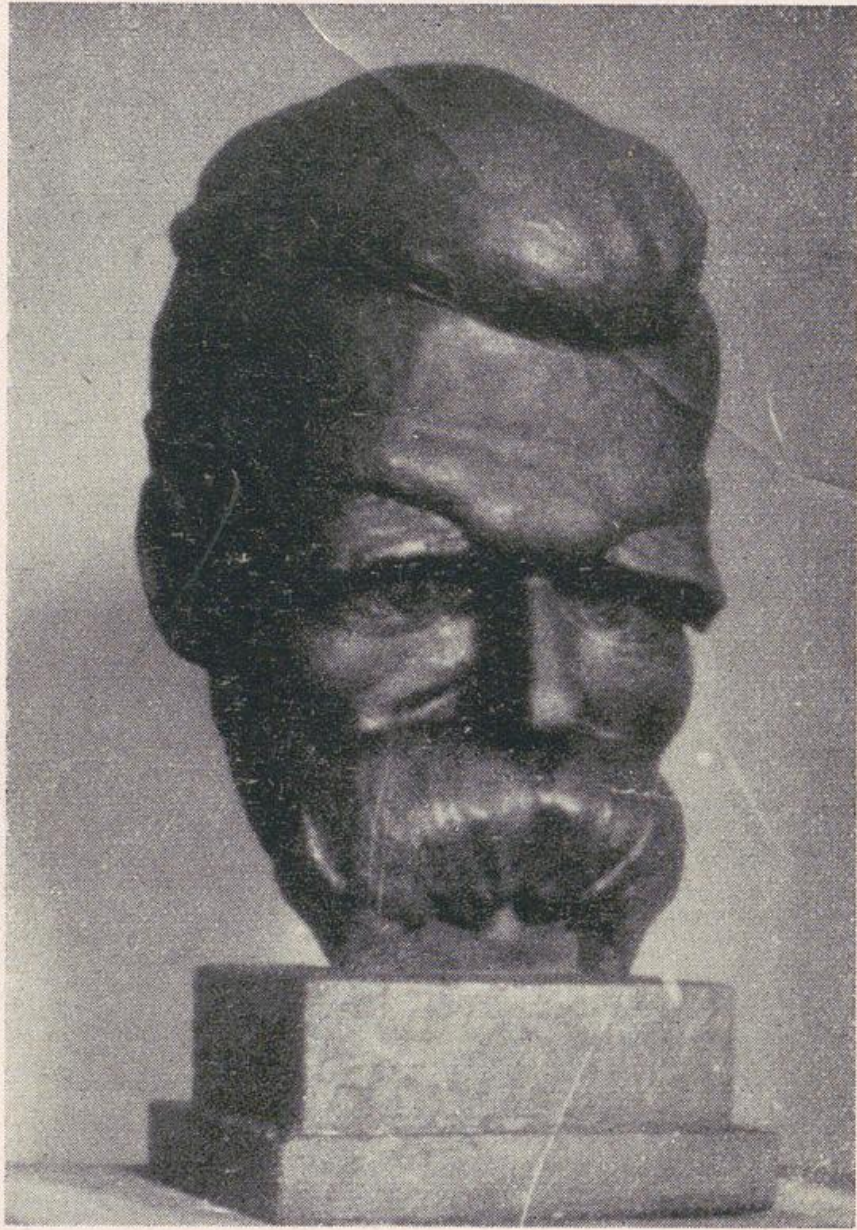
N. BULDER

St. Martin



H. VAN DER STOK

Tierkreisbild



D. TE NIJENHUIS

Porträtbüste Friedrich Nietzsche