

**Landesbibliothek Oldenburg**

**Digitalisierung von Drucken**

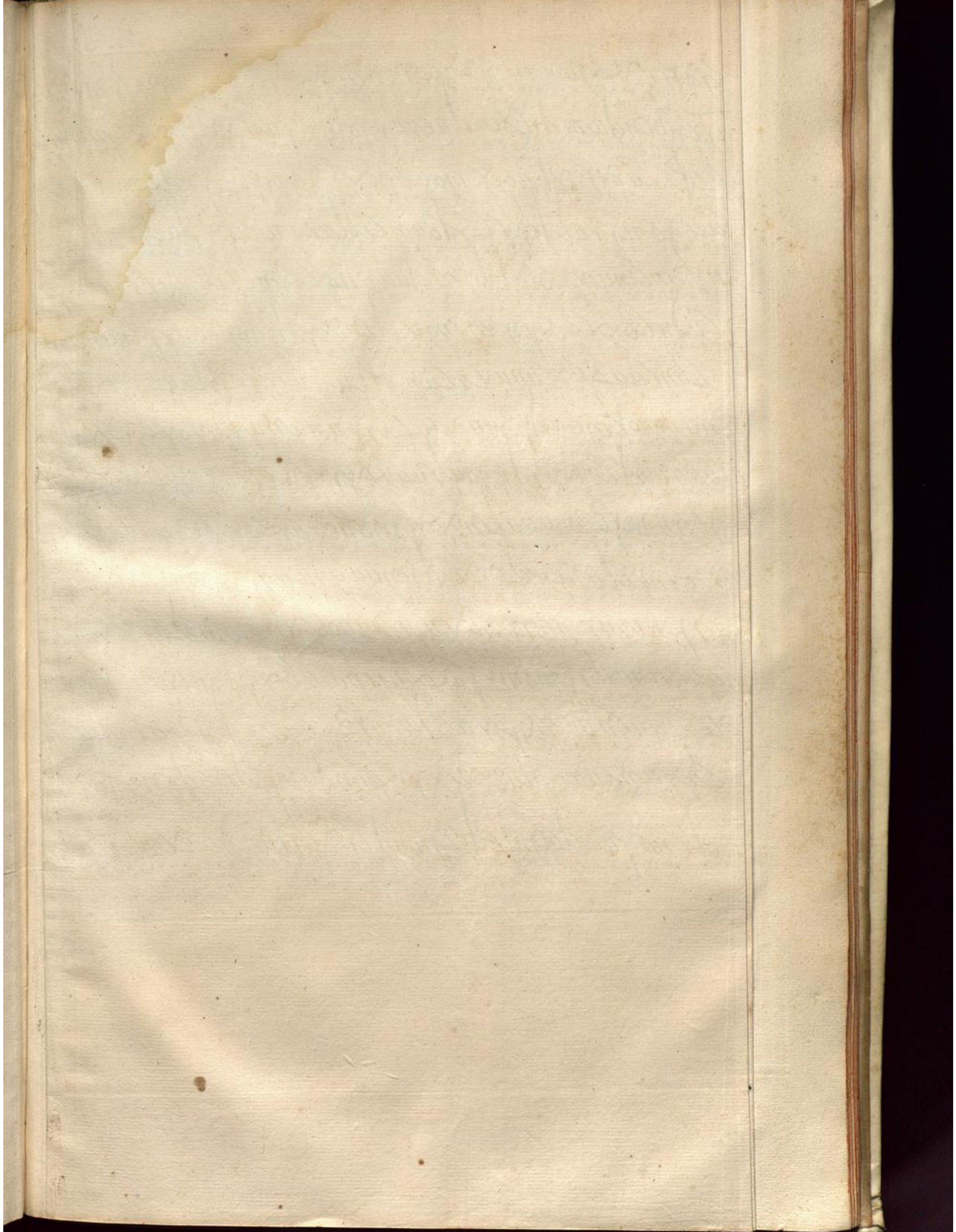
**Librorum De Re Diplomatica Supplementum**

**Mabillon, Johannes**

**Luteciae-Parisiorum, 1704**

Karten

**urn:nbn:de:gbv:45:1-3159**



Handwritten text in a cursive script, likely a historical document or manuscript. The text is densely packed and spans across the gutter of the book. The script is characteristic of the early modern period, possibly a form of German or Dutch cursive. The text is written in dark ink on aged, slightly yellowed paper. The left page contains approximately 15 lines of text, and the right page contains approximately 15 lines of text. The text is written in a single column on each page. The handwriting is somewhat slanted and compact, with many small letters and frequent use of ligatures. The overall appearance is that of a well-used, historical manuscript.

