

Landesbibliothek Oldenburg

Digitalisierung von Drucken

Chart of the world

Berghaus, Hermann

Gotha, 1863

[urn:nbn:de:gbv:45:1-600017](https://nbn-resolving.org/urn:nbn:de:gbv:45:1-600017)

CHART OF THE WORLD

containing the
LINES OF OCEANIC MAIL STEAM COMMUNICATION
and
OVERLAND ROUTES,

the
great aerial and submarine Telegraphs,
and
the principal tracks of Sailing vessels;
showing the
direction and mean velocity of Oceanic currents
and important Deep-sea Soundings;
with 4 additional Charts showing the
general Currents of air, the cotidal lines
and the lines of equal magnetic Variation.

zur Uebersicht
der regelmässigen Dampfschiffahrts-Linien
und
Ueberland-Routen

der
grossen Land- und Untersee-Telegraphen,
sowie
der wichtigeren Segelschiffs-Courses,
der
Meeres-Strömungen nach Richtung und Schnelligkeit
und neuerer Seetiefen-Messungen;
mit 4 Nebenkarten zur Darstellung
der Haupt-Windrichtungen, der Linien gleicher Gezeiten
und gleicher magnetischer Missweisung.

VON

HERMANN BERGHAUS UND FR. V. STÜLPNAGEL.

GOtha: JUSTUS PERTHES, 1863.

8 Seiten Preis 4 Thlr., auf Leder aufge. in Mappe 1/2 Thlr.

MERCATORS PROJECTION

CONSTRUCTED BY

HERMANN BERGHAUS

and

FR. V. STÜLPNAGEL,

GOtha:

JUSTUS PERTHES

1863.

100
110
120
130
140
150
160
170

Farbkarte #13
Blue Cyan Green Yellow Red Magenta White 3/Color Black
B/G.

MB 2064



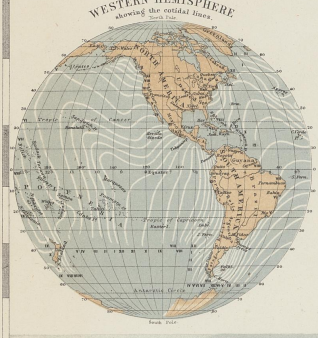
Printed by C. H. Bartholin, Götta.



MB 2° 67



180 170 160 150 140 130 120 110 100



EXPLANATION.

English Lines	(or any other) 100 miles	Trunks of sailing vessels
Dutch	Monthly means	General Sound
French	100 miles	10° within 10 days
Spanish	100 miles	Remained Sound
Italian	100 miles	Great Telegraph Lines
Russian	100 miles	General Telegraph
American	100 miles	10° along latitude
		10° original
		10° original
		10° original



Farbkarte #13
B.I.G.

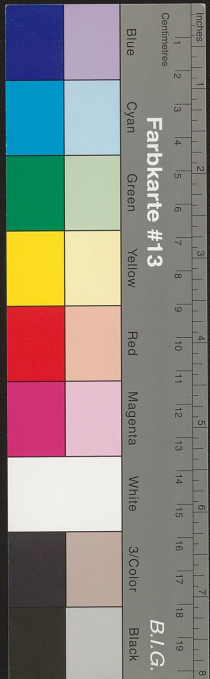
Blue	Cyan	Green	Yellow	Red	Magenta	White	3/Color	Black
------	------	-------	--------	-----	---------	-------	---------	-------

Centimeters
1 2 3 4 5 6 7 8 9 10 11 12 13 14 15 16 17 18 19



MB 2064

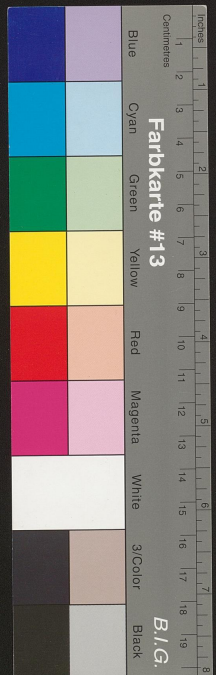
2





MB 2067

3





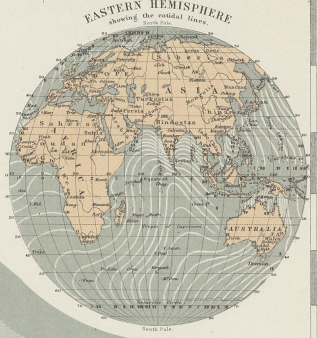
MB 2067
4





ABBREVIATIONS.

pt	Point	W	West	W	Wind
C	Cape	C	Canal	B	Bay
St	Strait	Q	Quarry	Br	Branch
Is	Island	S	Sea	Ch	Channel
Str	Strait	W	Water	C	Canton
Is	Island	Y	Yacht	D	Dock
Is	Island	L	Lake	IP	Island
Is	Island	Y	Yacht	Fr	French
Is	Island	Y	Yacht	P	Port
Is	Island	Y	Yacht	Sp	Spanish
Is	Island	Y	Yacht	Sw	Swedish



1
2
3
4
5
6
7
8
9
10
11
12
13
14
15
16
17
18
19
20

Blue
Cyan
Green
Yellow
Red
Magenta
White
3/Color
Black

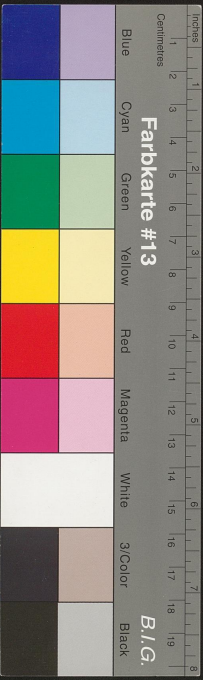
Farbkarte #13
 B./G.

LANDES
BIBLIOTHEK
OLDENBURG



MB 2067

5



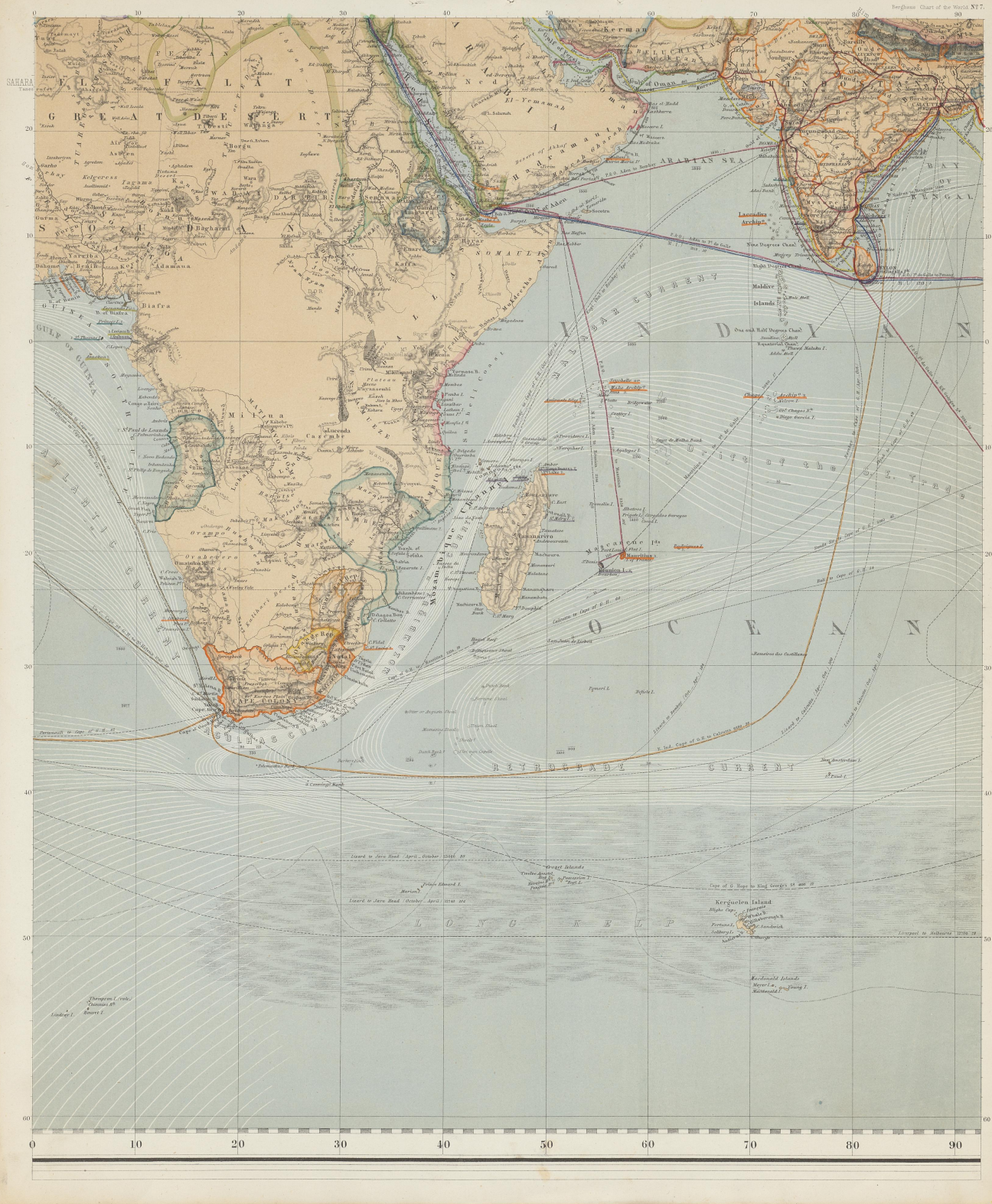
LANDES
BIBLIOTHEK
OLDENBURG



MB 2067

6





Farbkarte #13

Blue	1
Cyan	2
Green	3
Yellow	4
Red	5
Magenta	6
White	7
3/Color	8
Black	9

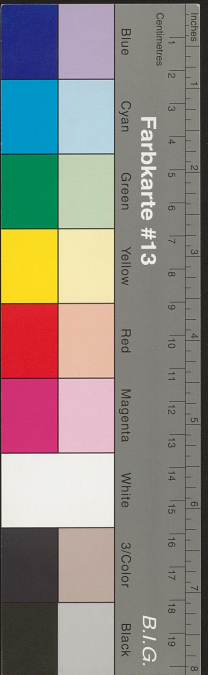
Centimeters
1 2 3 4 5 6 7 8 9 10 11 12 13 14 15 16 17 18 19

B.I.G.



190204

7





MBZ 067

8