

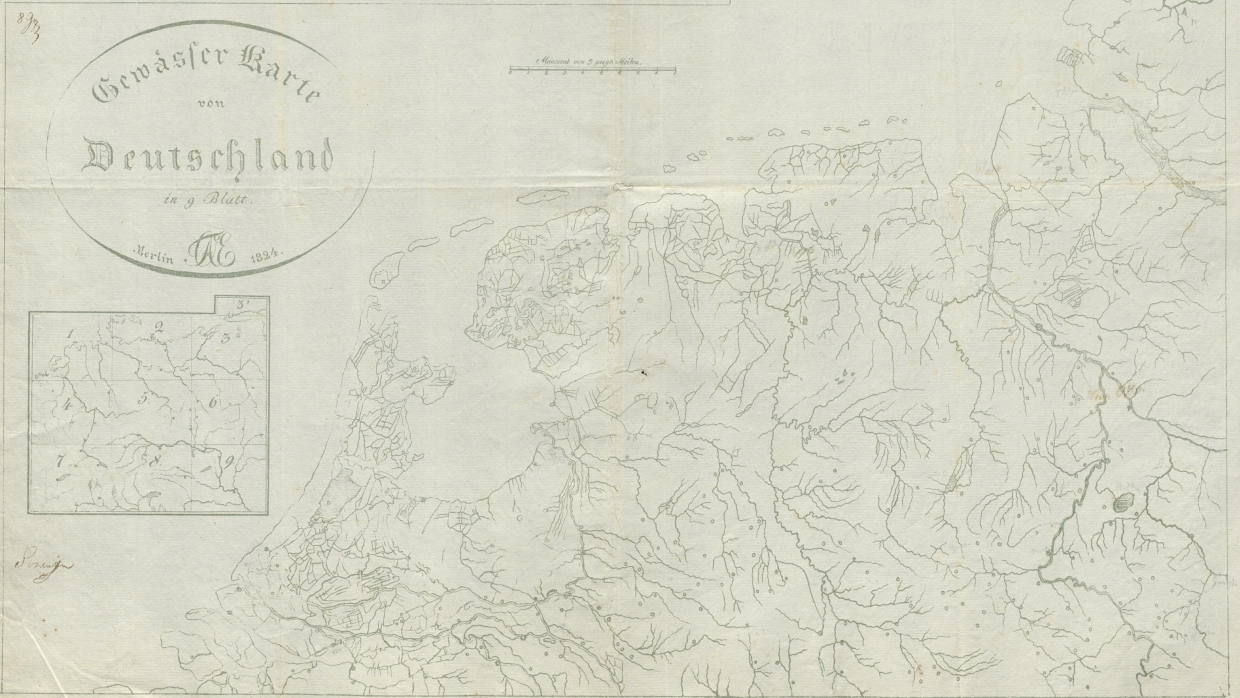
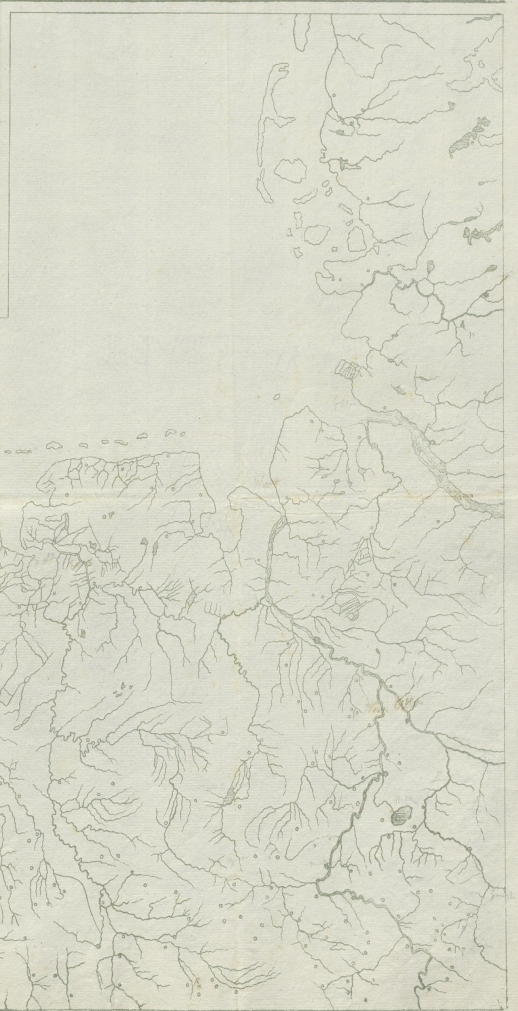
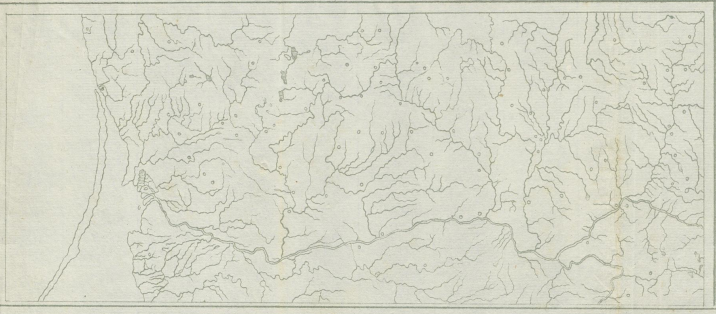
**Landesbibliothek Oldenburg**

**Digitalisierung von Drucken**

**Gewässer-Karte von Deutschland**

**Berlin, 1824**

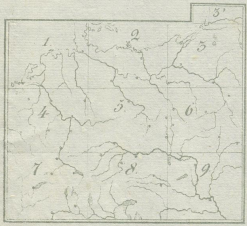
[urn:nbn:de:gbv:45:1-600034](https://nbn-resolving.org/urn:nbn:de:gbv:45:1-600034)



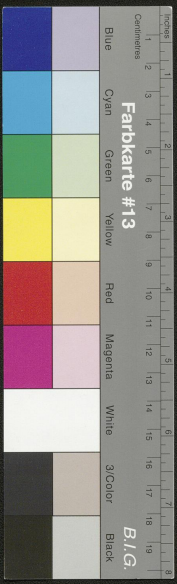
873

Gewässer Karte  
von  
Deutschland  
in 9 Blättern.  
Mertin N. 1894.

Maßstab von 500000:1



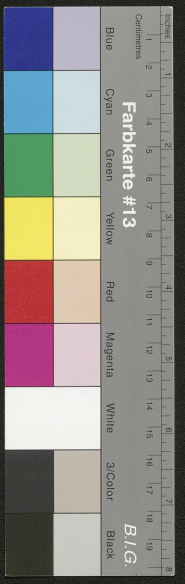
*Prague*





MB 2° 70

1





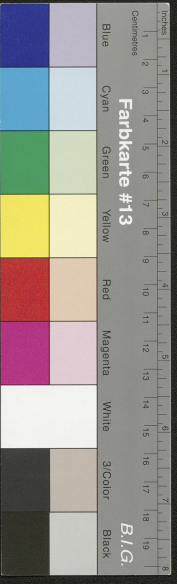
MB 2°70

2



375 26

3.





MB 2070

3

4 25 20



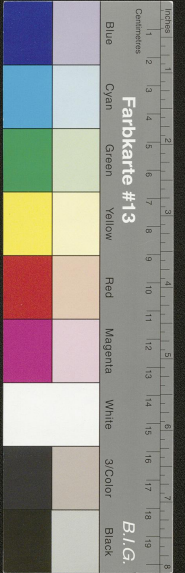
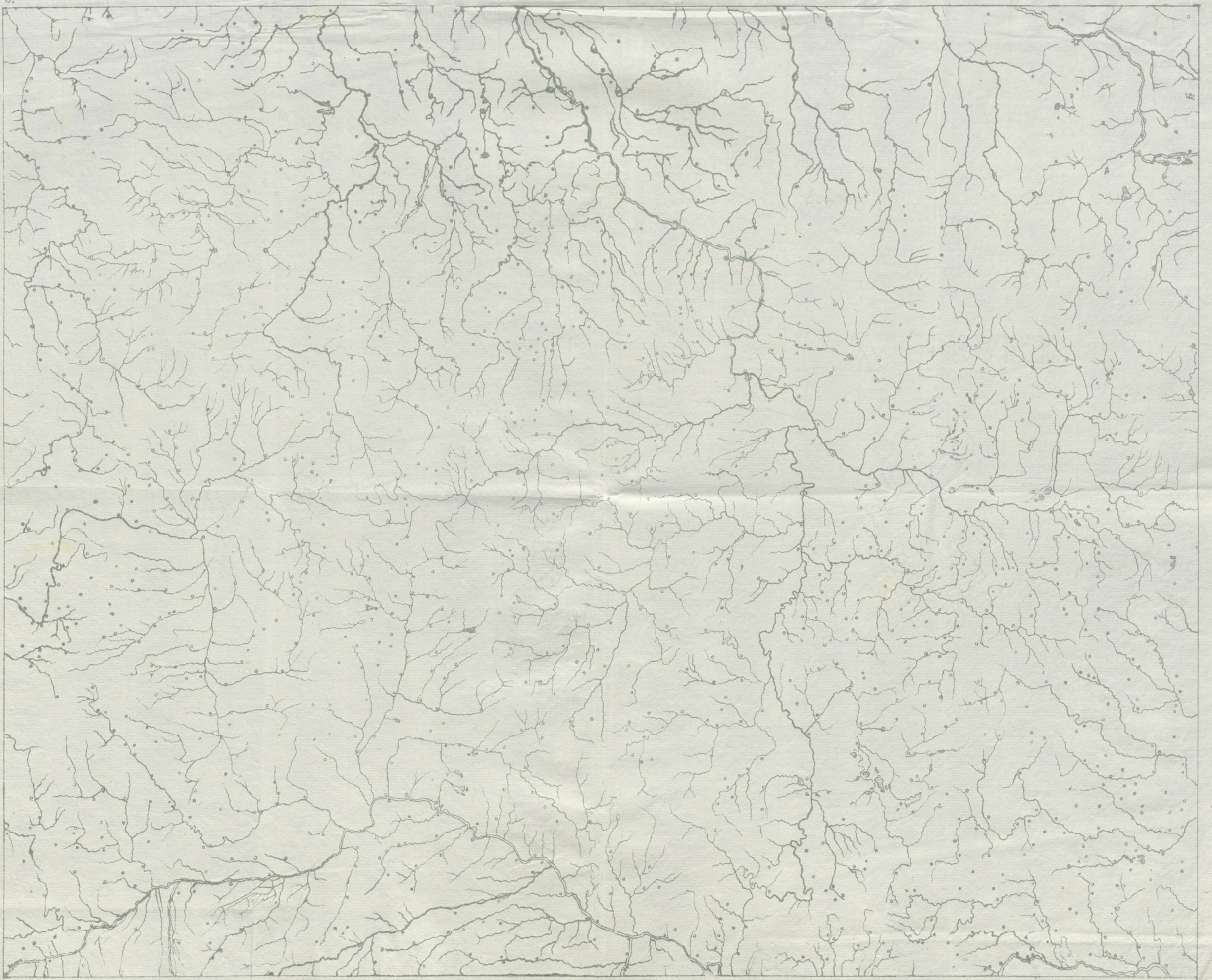
1 2 3 4 5 6 7 8 9 10 11 12 13 14 15 16 17 18 19  
 Centimeters  
**Farbkarte #13**  
 Blue Cyan Green Yellow Red Magenta White 30Color Black  
 B./G.





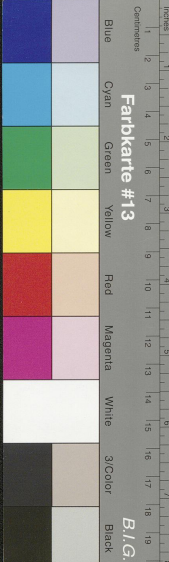
MB 2° 70

4





MB 20 70  
5

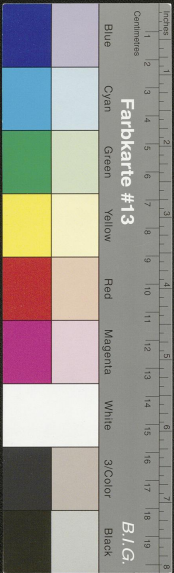




MB 2070

6

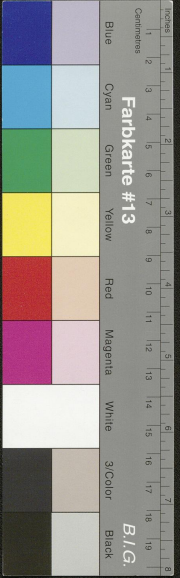
7 15-26





HB 2° 70

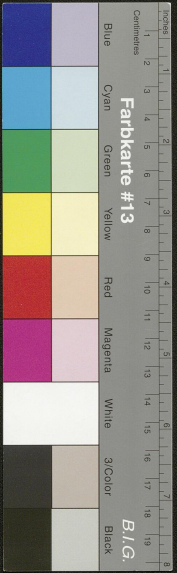
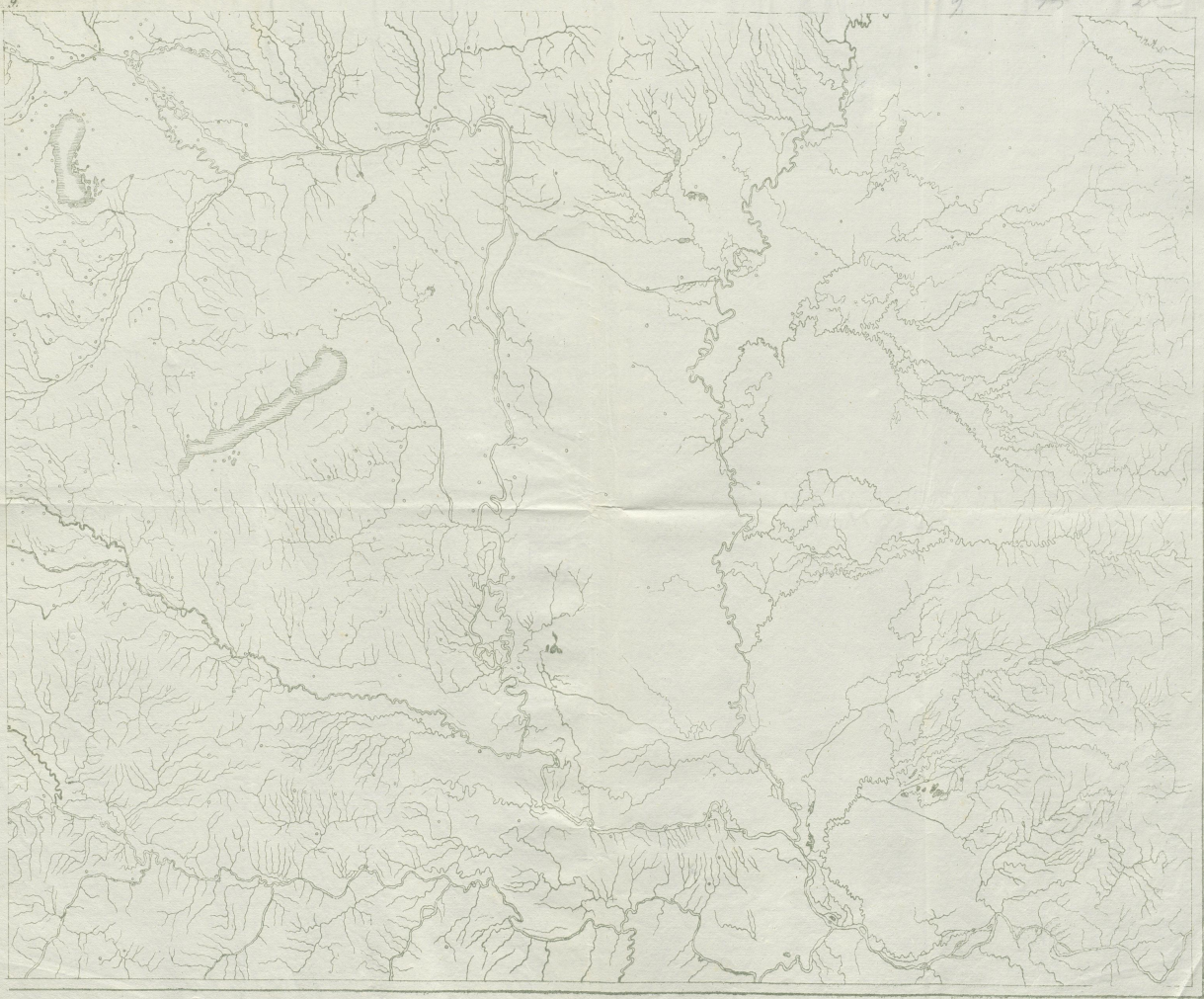
7







MB 2° 70  
8



III<sup>a</sup> 16)



MB 2° 70

9