

# **Landesbibliothek Oldenburg**

**Digitalisierung von Drucken**

**D. Lavrentii Heisteri Profess. Pvbl. Helmstadiensis  
Academ. Caesar. Regiae Lodin. Ac Berolin. Collegae  
Compendivm Anatomicvm Totam Rem Anatomicam  
Brevissime Complectens**

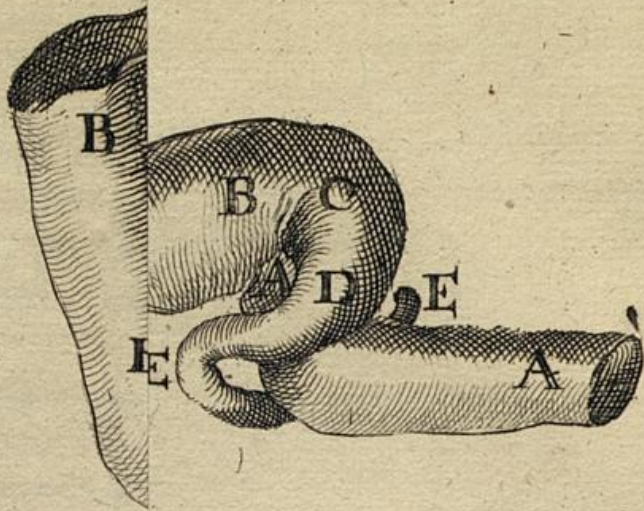
**Heister, Lorenz**

**[Norimbergae, [MDCCXXXII.]**

**VD18 90513150**

Illustration: Tab. VII.

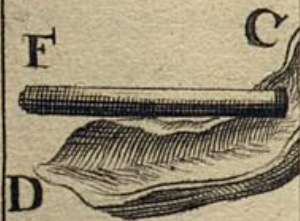
**urn:nbn:de:gbv:45:1-9958**



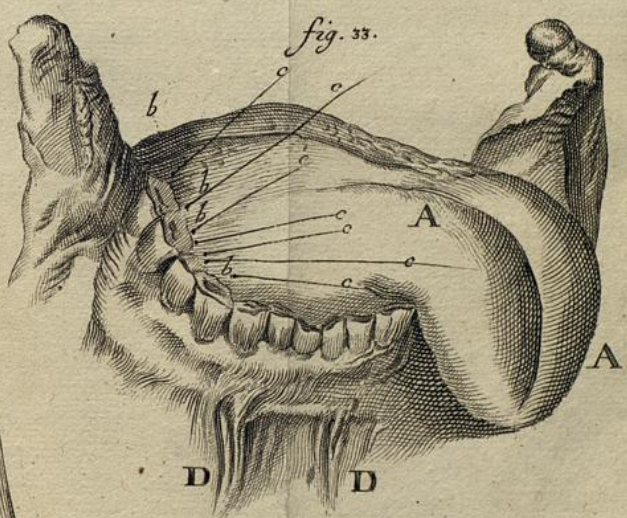
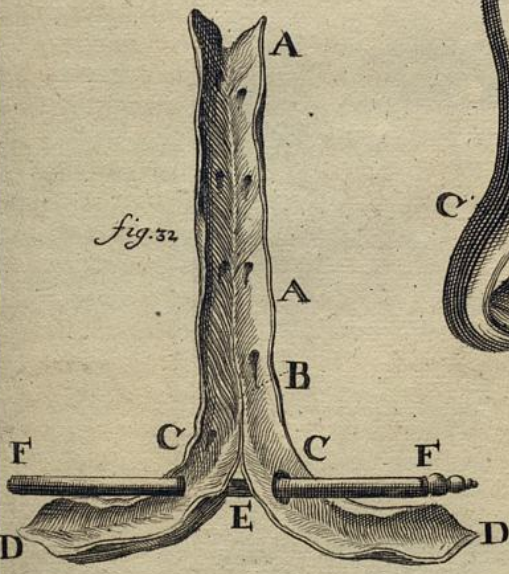
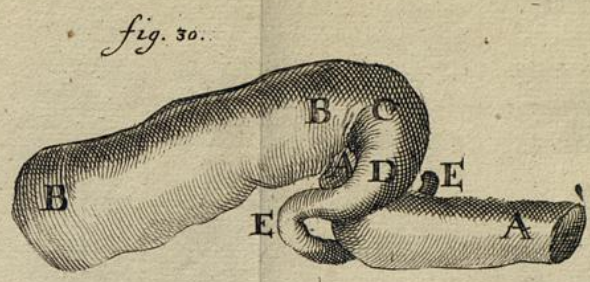
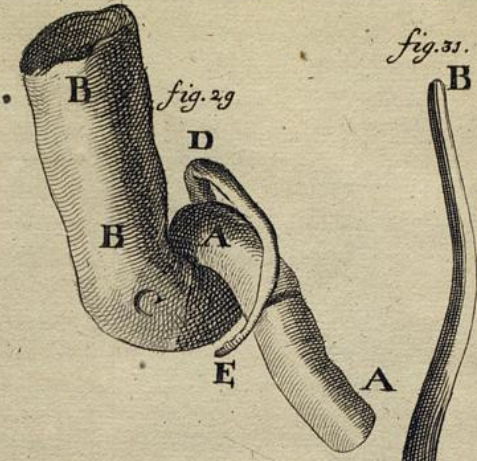
*fig. 33.*



*fig. 32.*



*Fröling pin*



*Frotingius*





C Cœcum.

D Initium processus vermiformis.

E E Singularis huius flexus circa ileum.

Fig. 31. *Processum quendam vermiformem separatim ex adulto, peculiaribus flexionibus, & quasi gyris donatum, exhibet; qui simul solito longior erat.*

A Principium eius a cœco resectum.

B Finis sursum spectans.

CC Singulares flexiones.

Fig. 32. *Sinum longitudinalem dura matris cum lateralibus exhibet, quibus sinus peculiaris transversus in hoc cadavere interiectus erat,*

A A Sinus longitudinalis pars aperta.

B Locus, ubi accurate in duas æquales laterales, (quod sæpius ita non contingit) dividebatur in hoc cadavere.

CC Initium duorum lateralium.

DD Laterales in progressu suo resecti.

E Sinus quidam transversus, duobus lateralibus communicationem præstans, per quem

FF Stylus crassus facile transmittebatur.

Huius sinus transversus hiatus in dextro sinu amplior erat, quam in sinistro. Conf. Not. (48\*)

Fig. 33. *Repræsentat linguam cum maxilla inferiori adhuc cohærentem, & in illa oscula ductuum salivalium glandulæ sublingualis, sicut in hoc erant cadavere.*

AA Lingua ad latus sinistrum reclinata.

bbb Oscula ductuum salivalium glandulæ sublingualis, quorum septem in hoc latere occurrant.