

# **Landesbibliothek Oldenburg**

**Digitalisierung von Drucken**

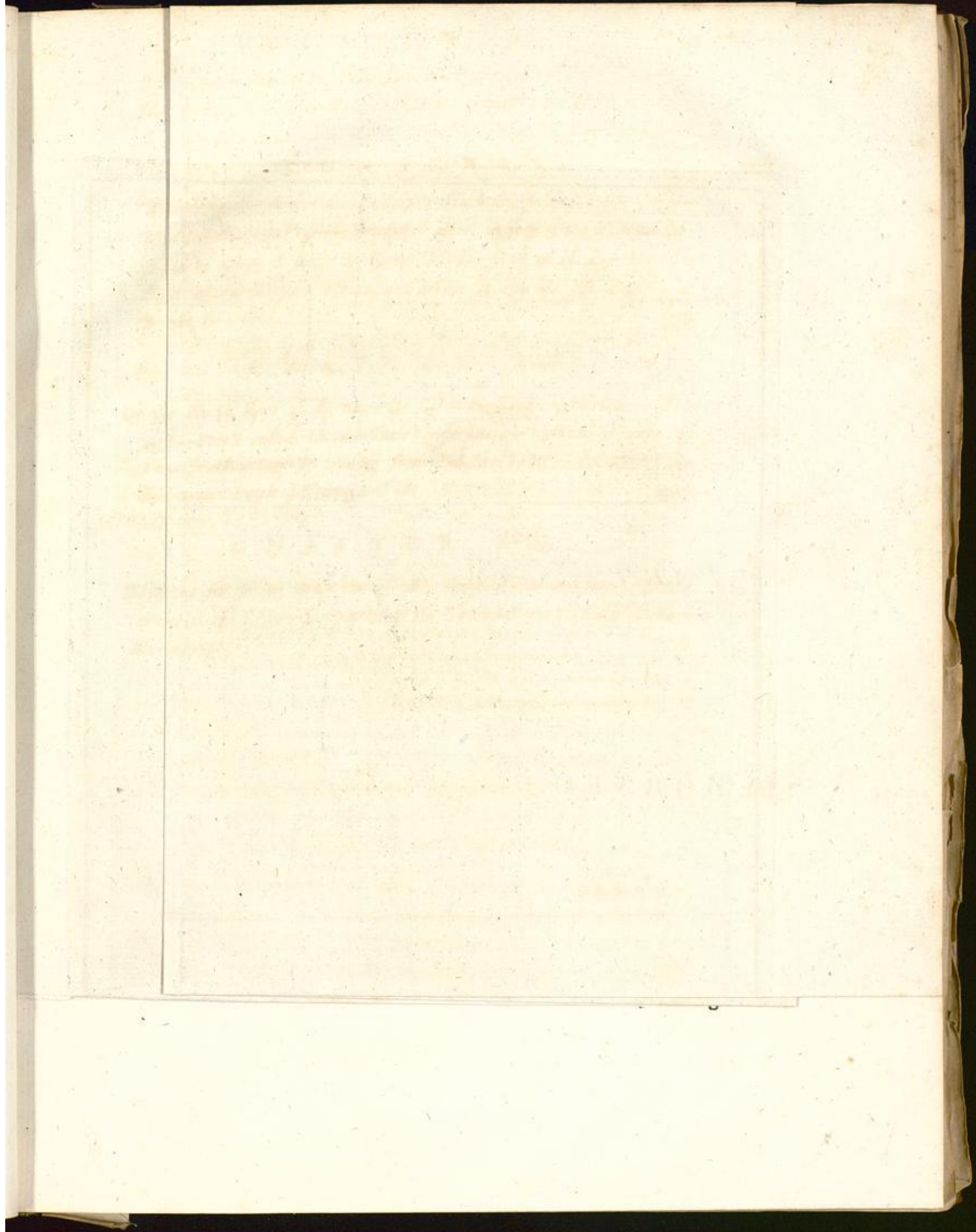
**A Voyage To New Guinea, And The Moluccas, From  
Balambangan: Including An Account of Magindano,  
Sooloo, and other Islands; And Illustrated With Thirty  
Copperplates, Performed In The Tartar Galley, ...**

**Forrest, Thomas**

**London, 1779**

In Testimony of Esteem and Regard for this great Maritime Abilities, To  
Sir William James Bar, Deputy Chairman of the Hon: E. India Company,  
This Map us Inscribed by his most humble Servant, Thomas ...

**urn:nbn:de:gbv:45:1-1505**



To face Page 1

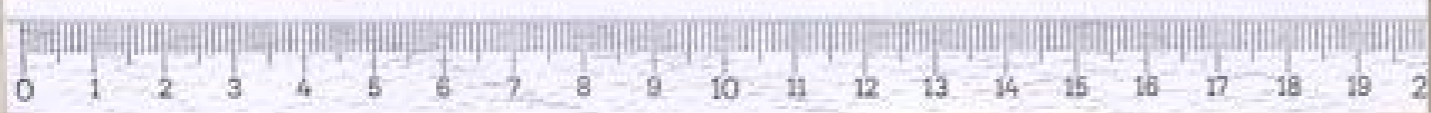
126° 127° 128° 129° 130° 131°

ANO

In TESTIMONY of

8°





In TESTIMONY of  
*Esteem and Regard*  
 for his great Maritime Abilities,  
 To  
*Sir William James Bar<sup>t</sup>*  
 Deputy Chairman of the Hon<sup>ble</sup> E. India Company.

This MAP is Inscribed  
 by his most humble Servant,  
*Thomas Forrest.*

Track of the Tartar Galleon  
 being to of the R. S. Coast Guard  
 on a Voyage of Discovery in 1774-75 & 76.  
 To assist the Mariners of

Latitude	Longitude	Time	Wind
Malacca Isl. Straits of Labellan	2	193	SE
Bassay on Mandala	5	193	SE
Selang on Bantayan	20	194	SE
that were daily	15	195	SE
Manupian on Bantayan	18	197	SE
Phaps on Weyman	3	197	SE
Offish on D <sup>e</sup>	11	197	SE
Barwah on D <sup>e</sup>	12	199	SE
Dary on New Guinea	8	191	SE
Alfo on Myzel	2	197	SE
Round Harbour on Kany	1	198	SE
Loran on Sallaba	3	193	SE
Lora on Magindano	0	192	SE
Island of Bantayan near D <sup>e</sup>	7	188	SE
Poffich on Magindano	7	189	SE
Tiguan on D <sup>e</sup>	7	189	SE
Blaw near D <sup>e</sup>	7	189	SE
Kamalukan on D <sup>e</sup>	7	181	SE

