

Landesbibliothek Oldenburg

Digitalisierung von Drucken

**A Voyage To New Guinea, And The Moluccas, From
Balambangan: Including An Account of Magindano,
Sooloo, and other Islands; And Illustrated With Thirty
Copperplates, Performed In The Tartar Galley, ...**

Forrest, Thomas

London, 1779

Pl. 15 P. 172

urn:nbn:de:gbv:45:1-1505



2 Crest Mark to go into Esbe Harbour keep the Island x shut in with y and borrow upon Esbe Island. c Crown Island W.N.3



Entrance of Round Harbour on Long Island t.t. Table Island c. Corocoro



ing making in 2 Hummocks here W. 2 S.

Tho: Vuurw Sculpt

hed by Capt. Tho: Forrest as the Act directs, Jan. 30th 1779.





Note. The Canary Islands are Uninhabited; They are so called from the Fruit Canary, that grows in great Plenty on the Largest.

Middle Islands
Dolphin's Nose
Red Spot

PART

OF

MYSOL ISLAND



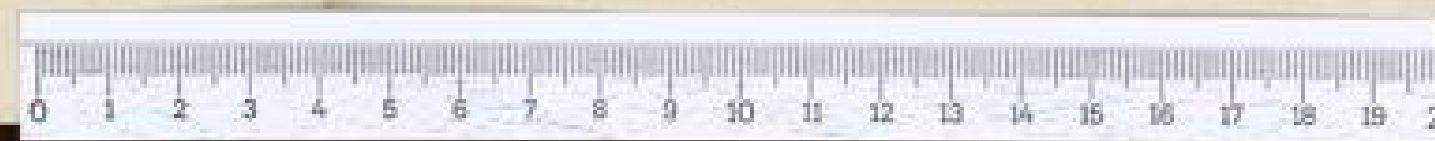
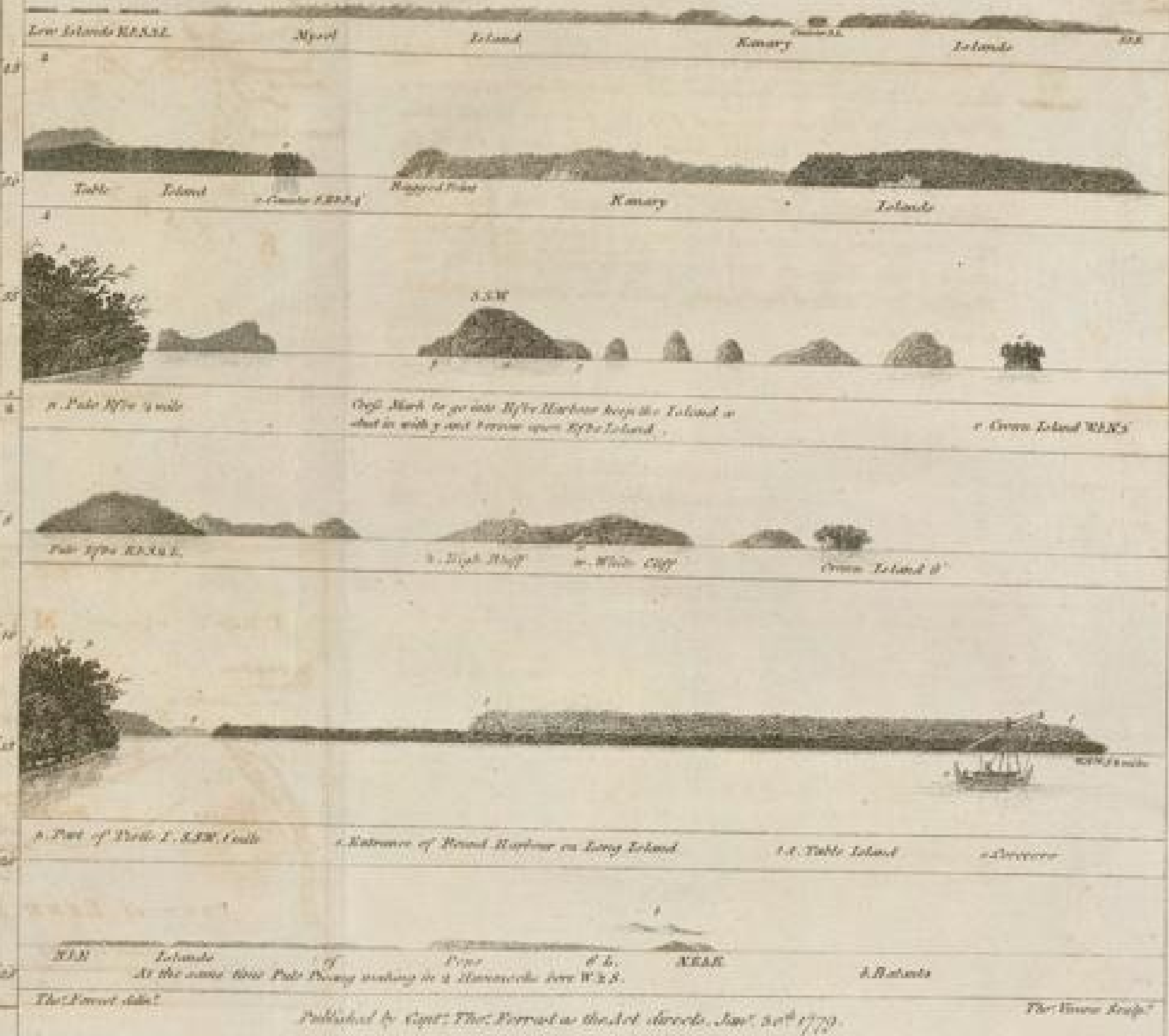
EPBE HARBOUR

Lat^o 42.10 S.

Longt^o 127.00 E. of Lond^o.

Red like a Sheep

Many Islands
about





Die Figuren sind nach dem Original gezeichnet.