

**Landesbibliothek Oldenburg**

**Digitalisierung von Drucken**

**Disputationes Chirurgicæ Selectæ**

**Haller, Albrecht von**

**Lausannæ, MDCCLV.**

**VD18 90538889**

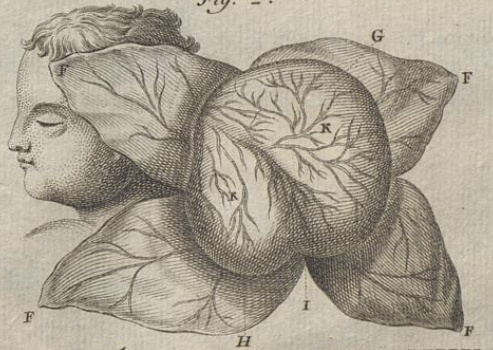
Illustration: Tab. XI. Disp. Chirurg. Tom. II. Corvinus De Hernia Cerebri.

**urn:nbn:de:gbv:45:1-16577**

Fig. 1.

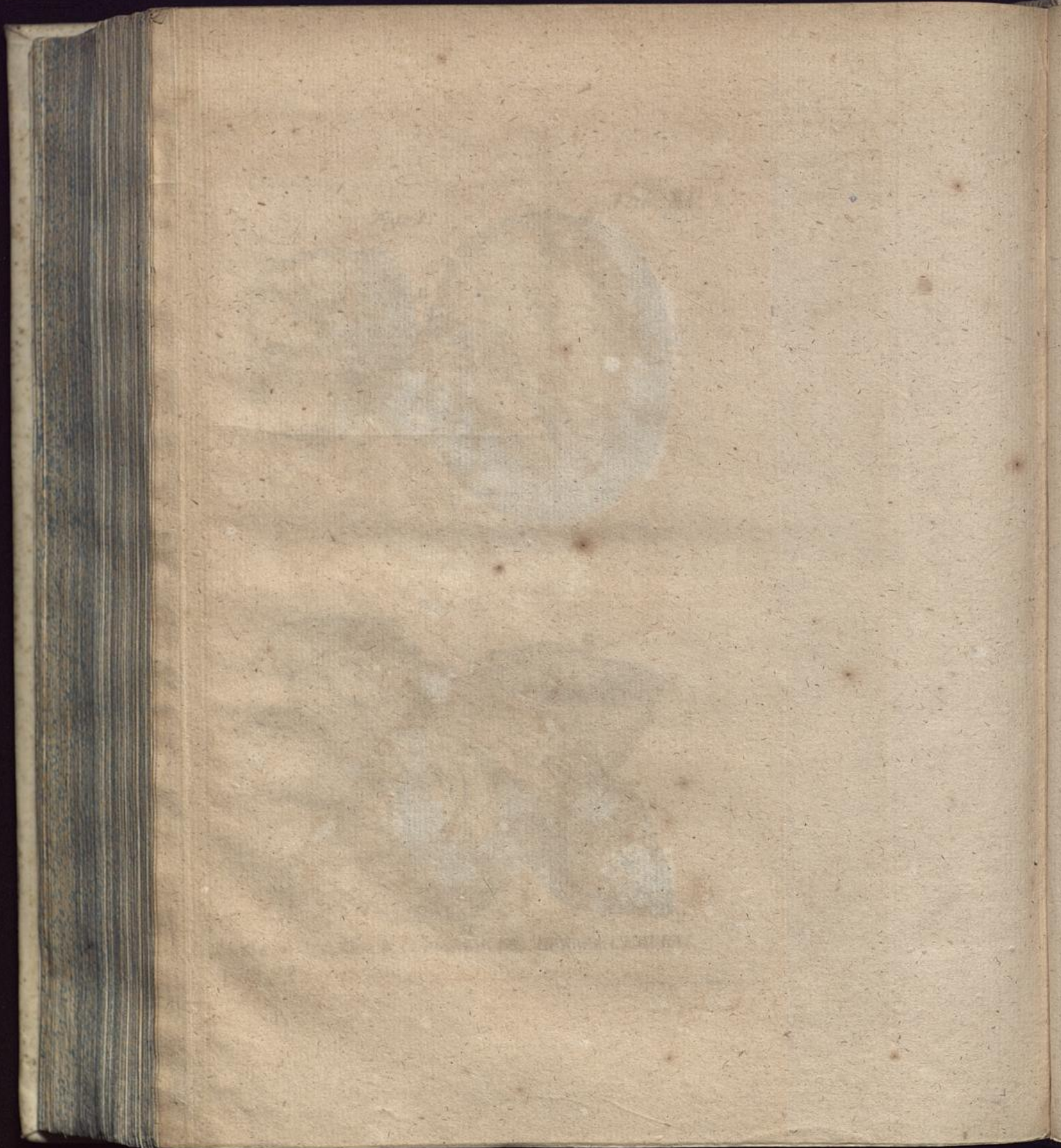


Fig. 2.



Diap. Chirurg. Tom. II. CORVINUS DE HERNIA CEREBRI.  
pag. 349.





Tab. XII

Fig. 5.



Fig. 6.



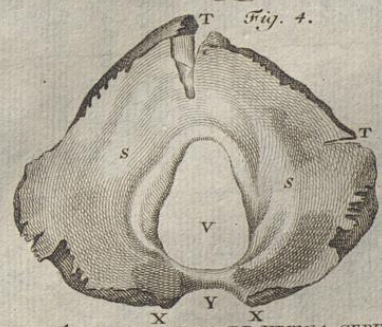
Tab. XII  
 Anatomie des Menschen  
 von J. G. Walther  
 1734



Fig. 5.



Fig. 4.



*Disp. Chirurg. Tom. II. CORVINUS DE HERNIA CEREBRI.  
pag. 349.*

