

**Landesbibliothek Oldenburg**

**Digitalisierung von Drucken**

**Disputationes Chirurgicæ Selectæ**

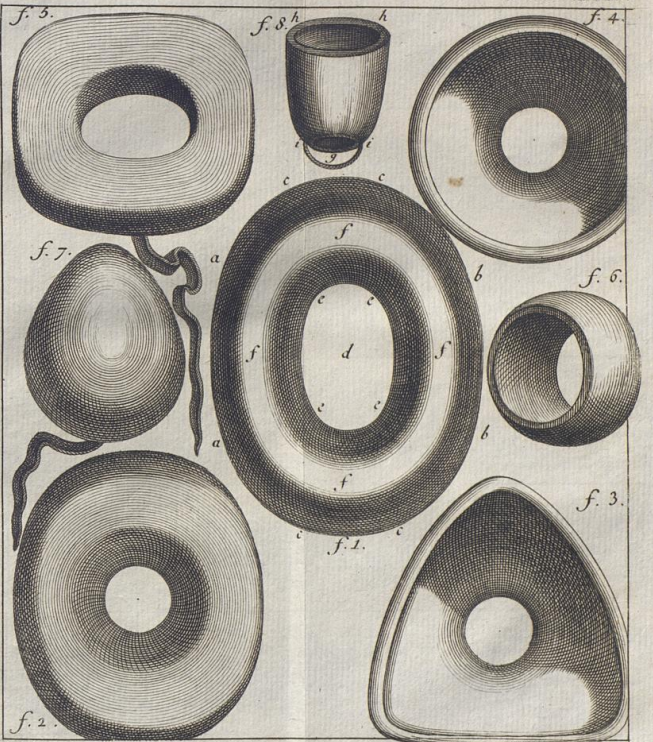
**Haller, Albrecht von**

**Lausannæ, MDCCLV.**

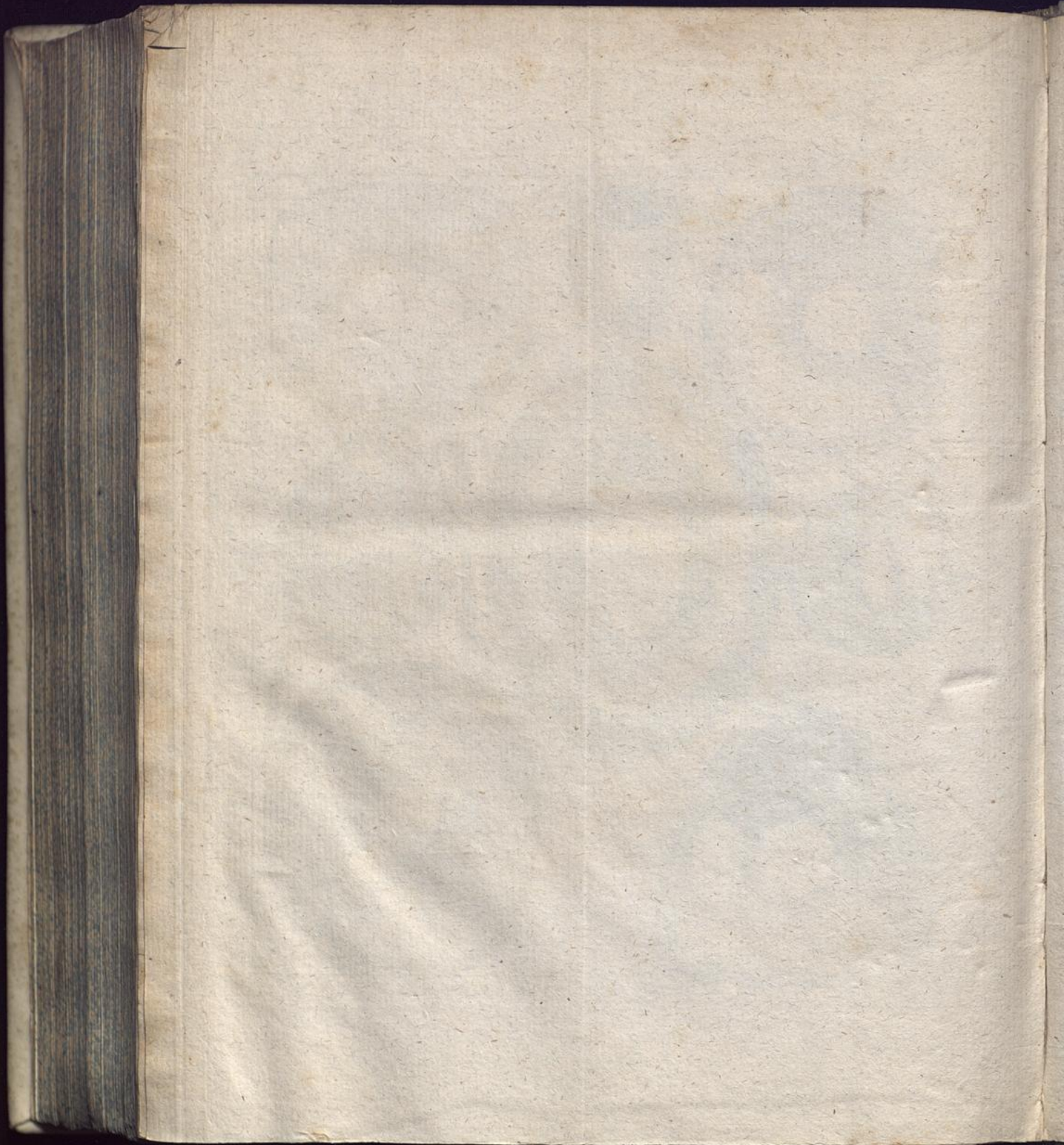
**VD18 90538919**

Illustration: Tab. XXIV. Disp. Chirurg. Tom. III. Boehmer de Prolapsu Uteri.

**urn:nbn:de:gbv:45:1-16590**



Disp. Chirurg. Tom. III. BOEHMER DE PROLAPSU UTERI.

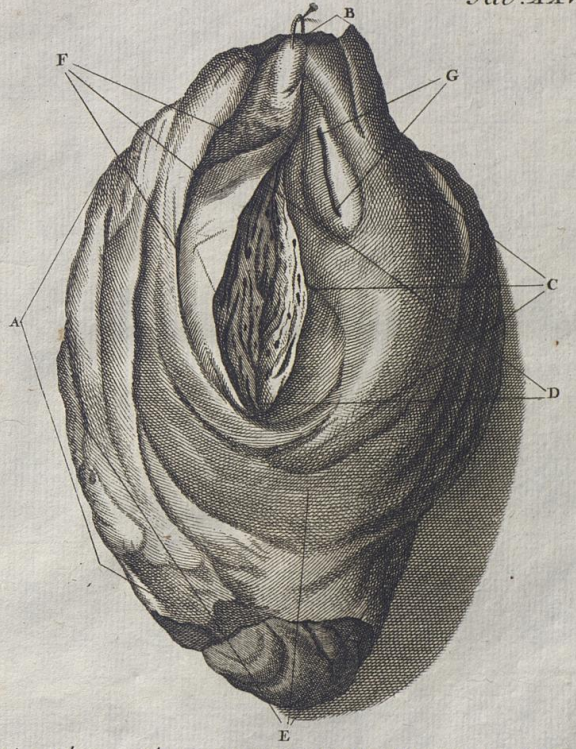


Tafel II



Das menschliche Herz in der natürlichen Gestalt dargestellt.  
1772





Disp. Chirurg. Tom. III. VATER DE SARCOMATE UTERINO  
pag. 632.