

Landesbibliothek Oldenburg

Digitalisierung von Drucken

A Voyage To The Pacific Ocean

Undertaken, By The Command Of His Majesty, For Making Discoveries in the Northern Hemisphere. To Determine The Position and Extent of the West Side of North America; its Distance from Asia; and the Practicability of a Northern Passage to Europe. Performed Under The Direction Of Captians Cook, ...

King, James

Cook, James

London, 1784

[Plate 80] View of Sulphur Island bearing Ene.

urn:nbn:de:gbv:45:1-2282

409

ber.

5.





North I.

View of *SULPHUR* Island bearing *ENE*.

Hill on the *S^t* Part



SULPHUR Island (Lat. $21^{\circ} 46' N.$
Long. $149^{\circ} 15' E.$
Var. $1^{\circ} 20' E.$



Var. $1^{\circ} 20' E.$ Nov. 1837

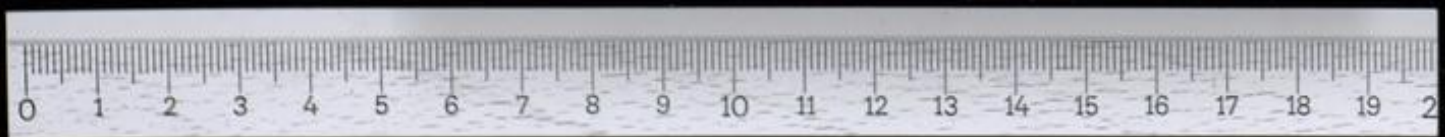
Var. $1^{\circ} 20' E.$

South I.



Nautic Miles

Barrow jr.



of *SULPHUR* Island bearing *ENE*.

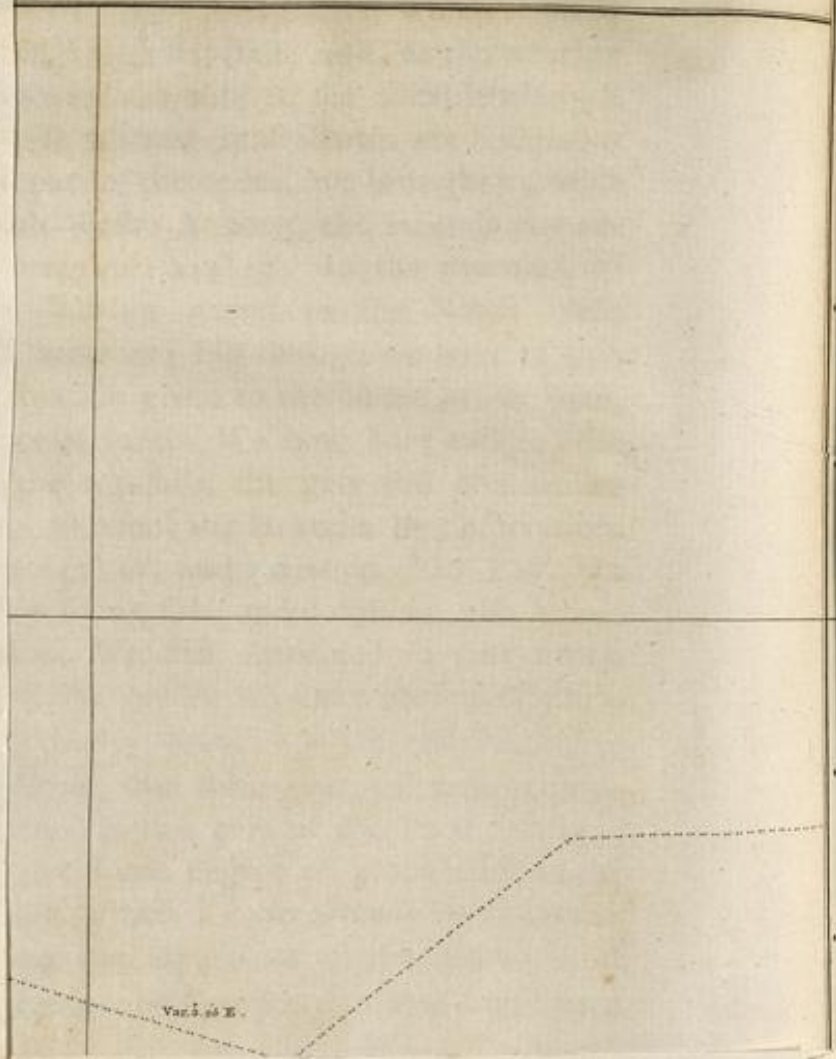
Hill on the *S^t* East



408

No
Frid

Satu



Var. of E.

Su

